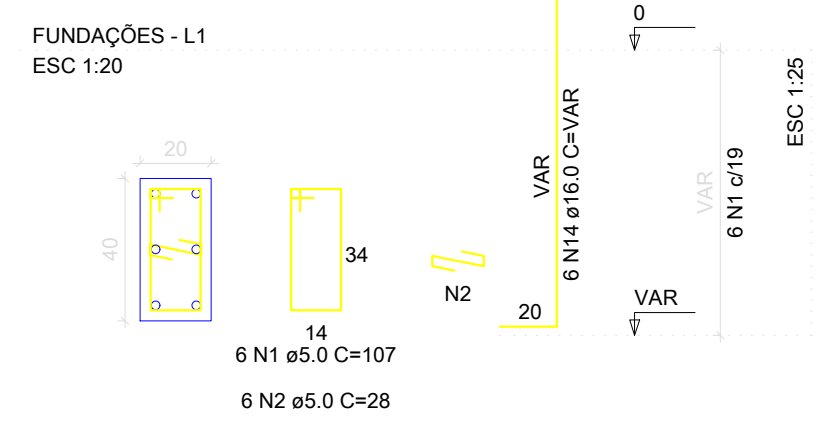
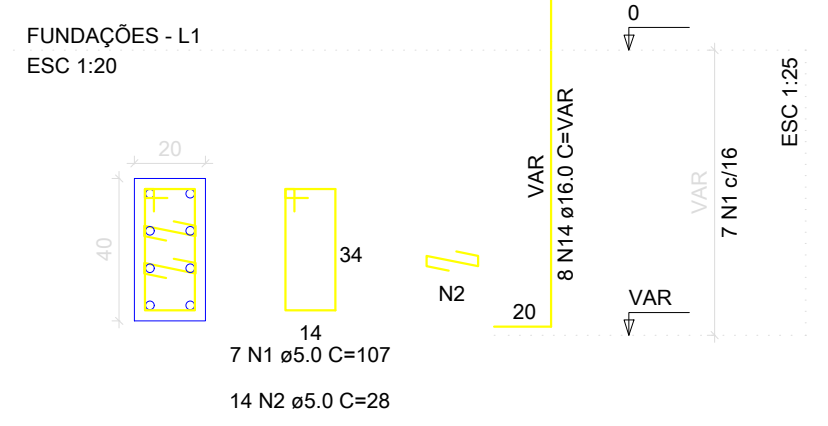


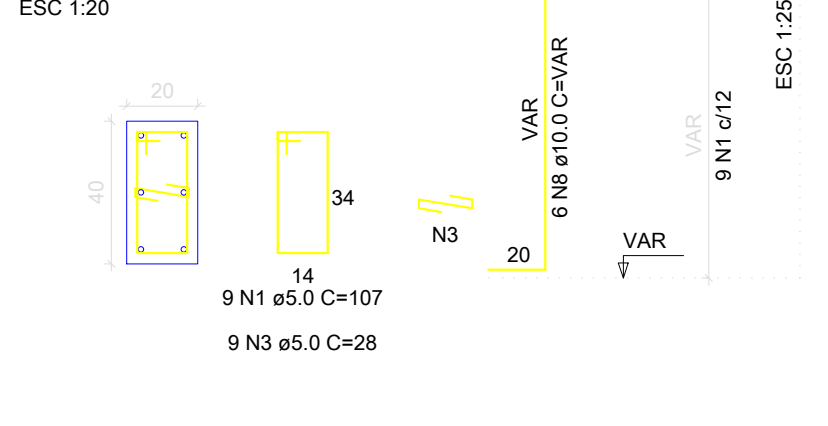
P1



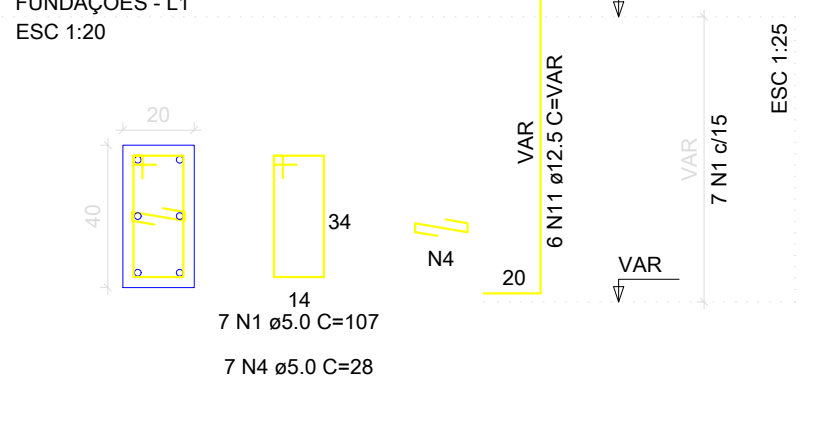
P2



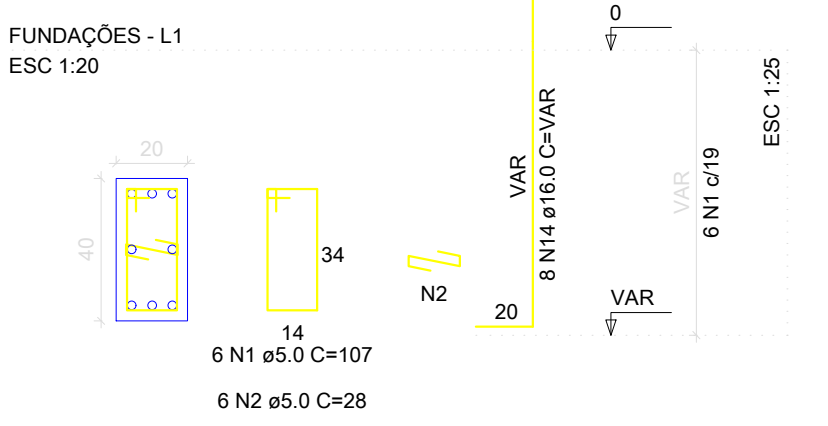
P3



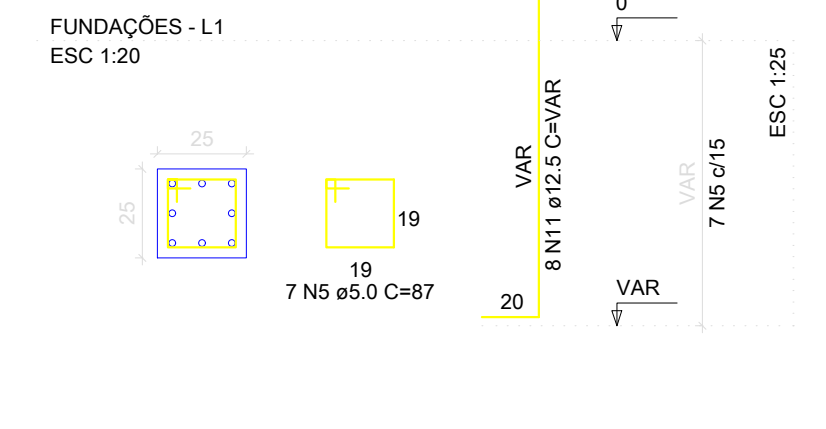
P4=P5=P8=P9=P10



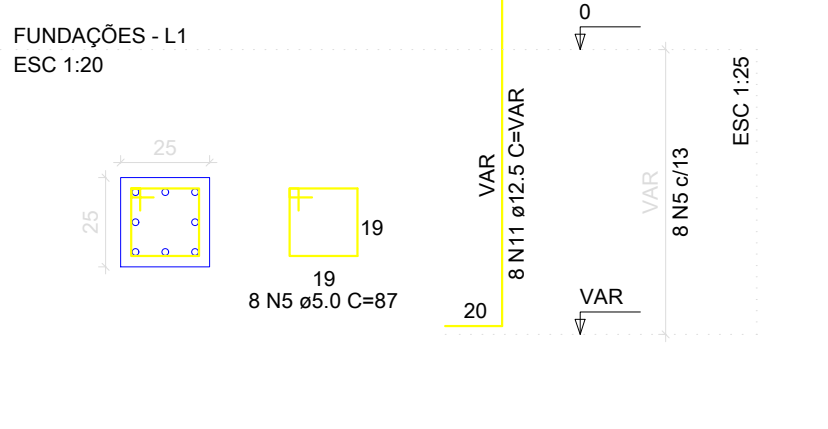
P6=P7



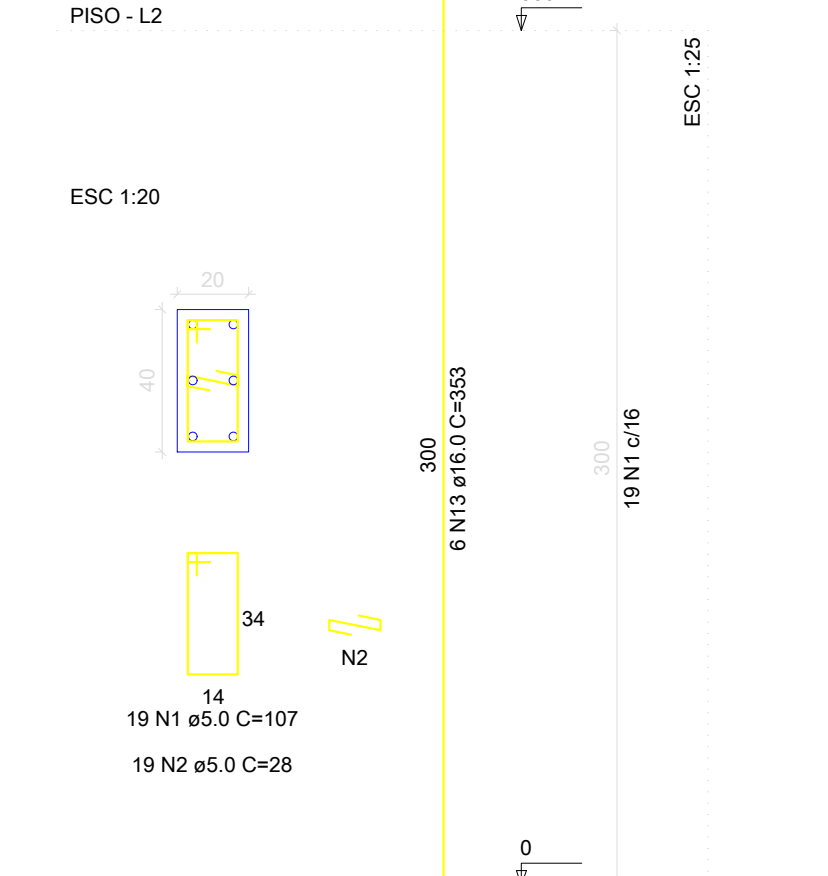
P11



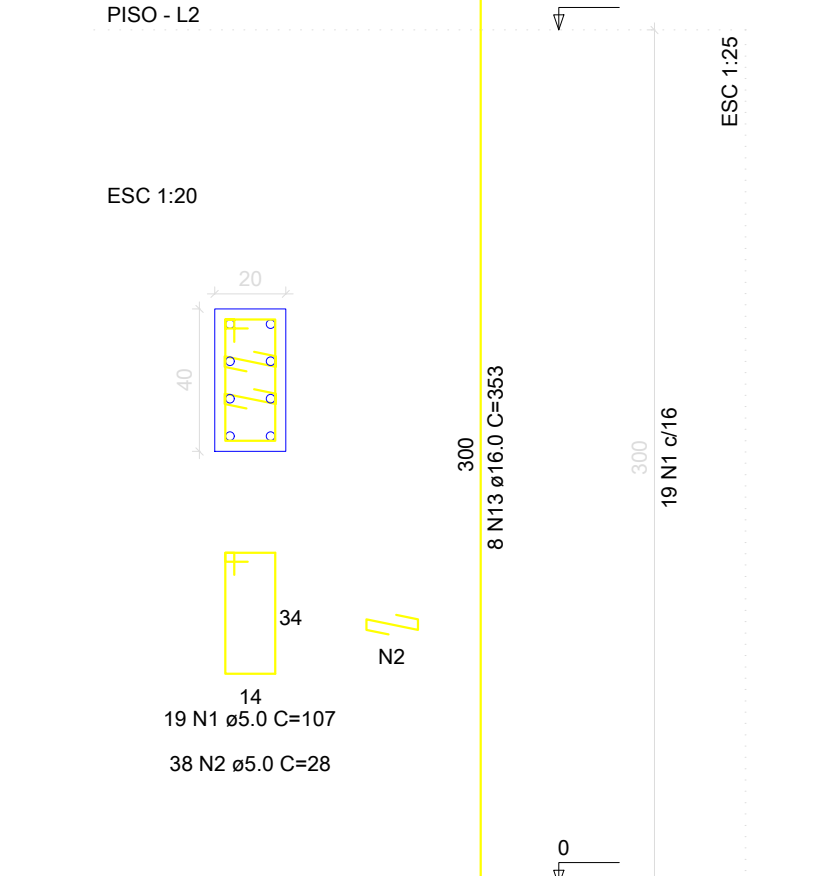
P12



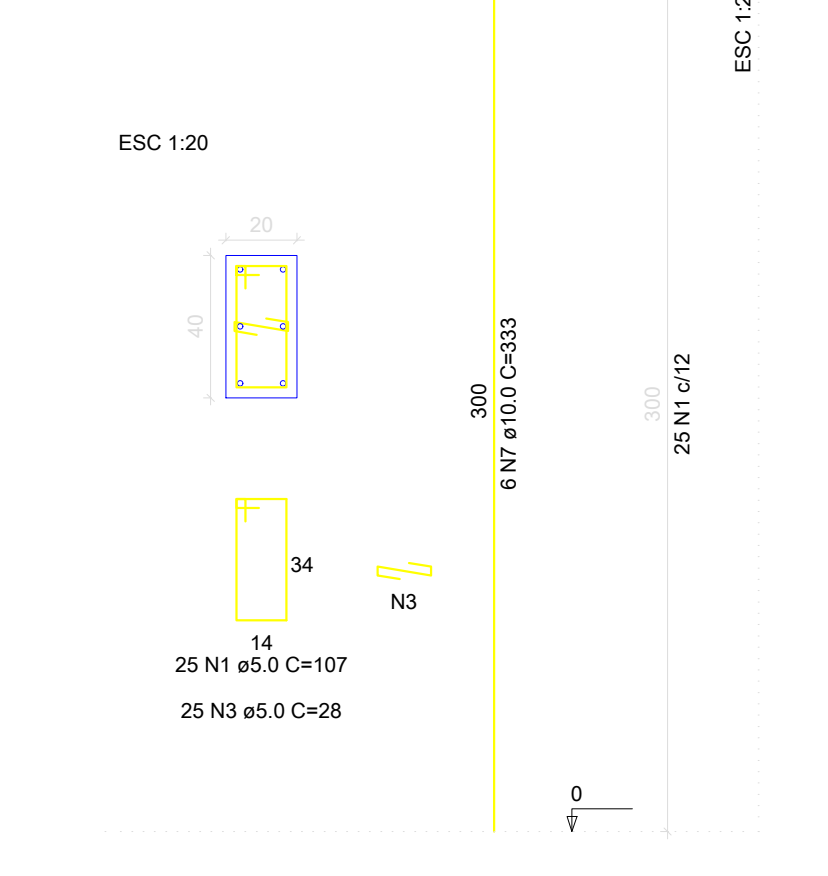
P1



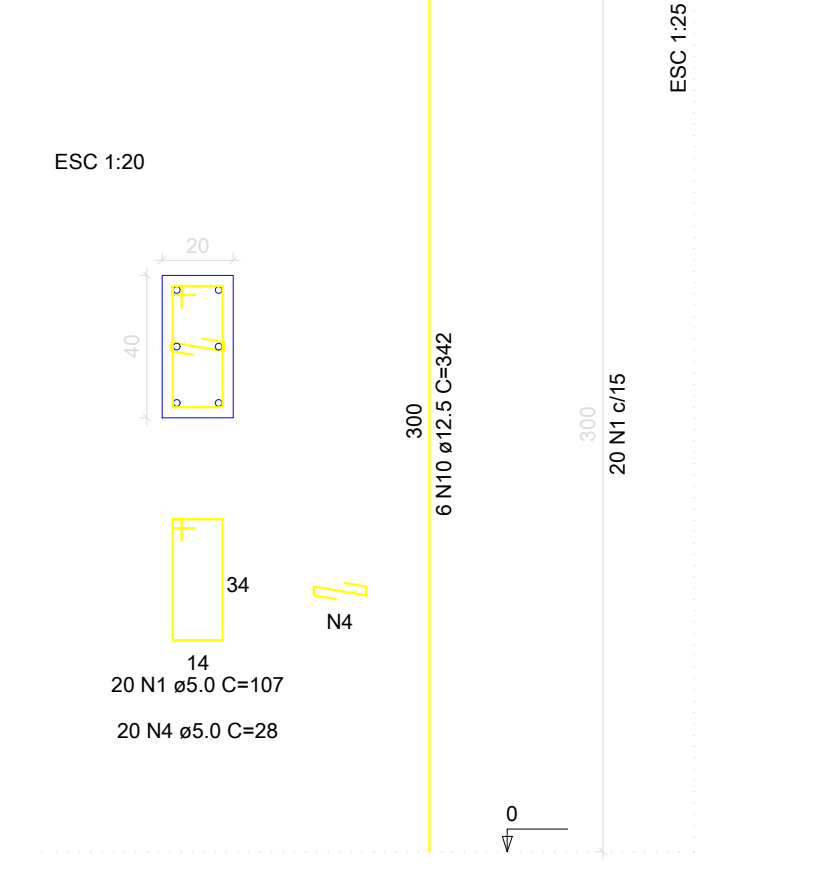
P2



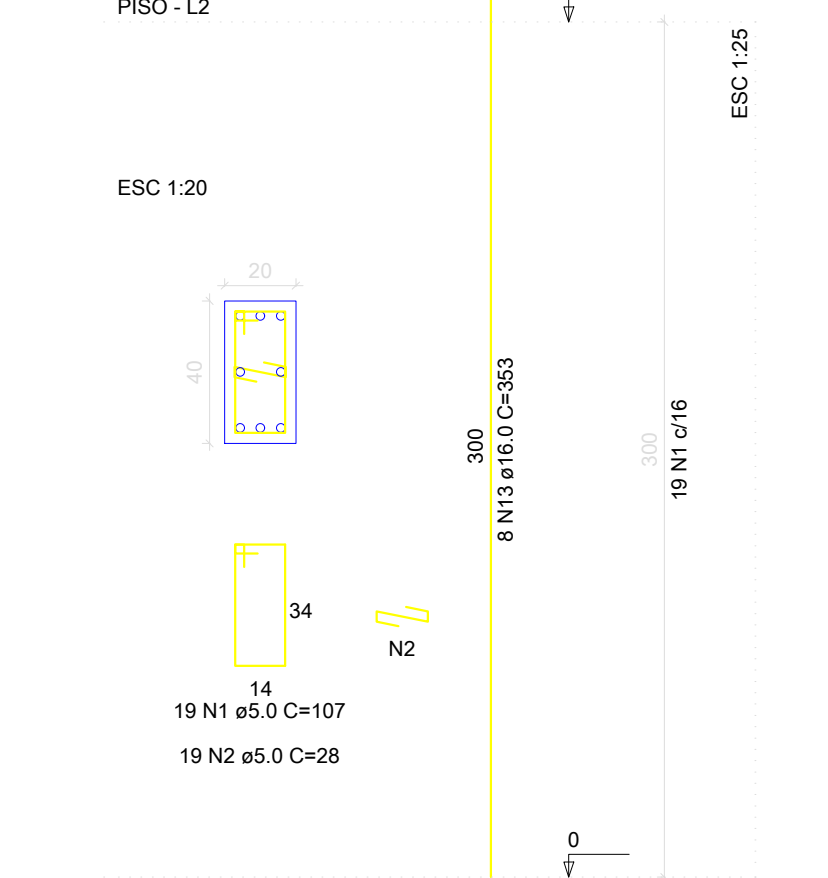
P3



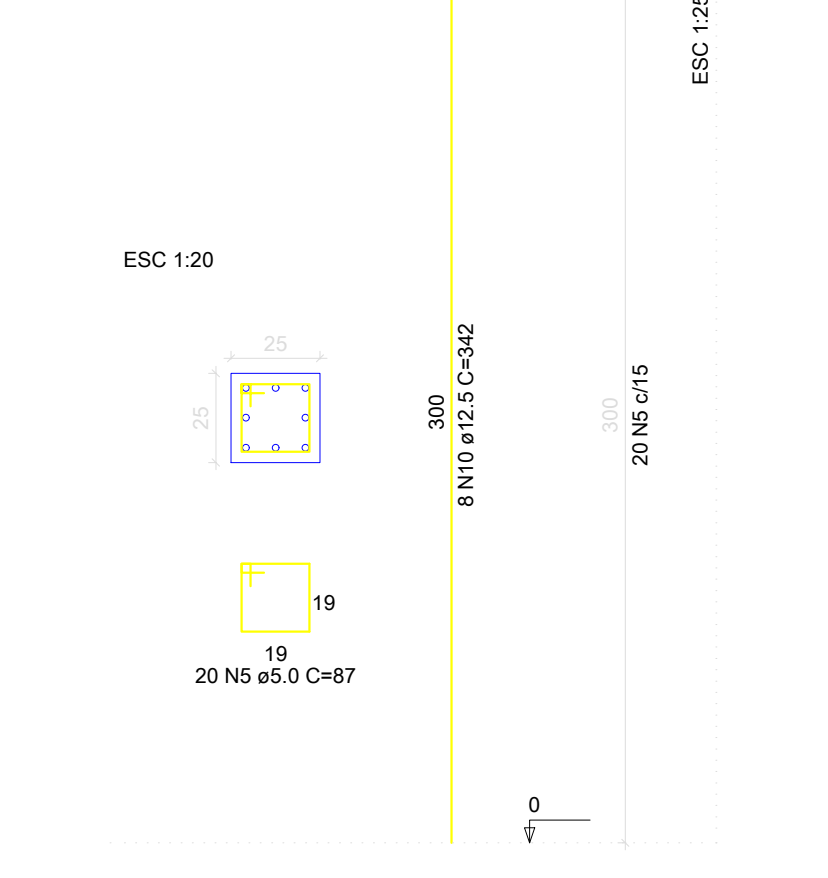
P4=P5=P8=P9=P10



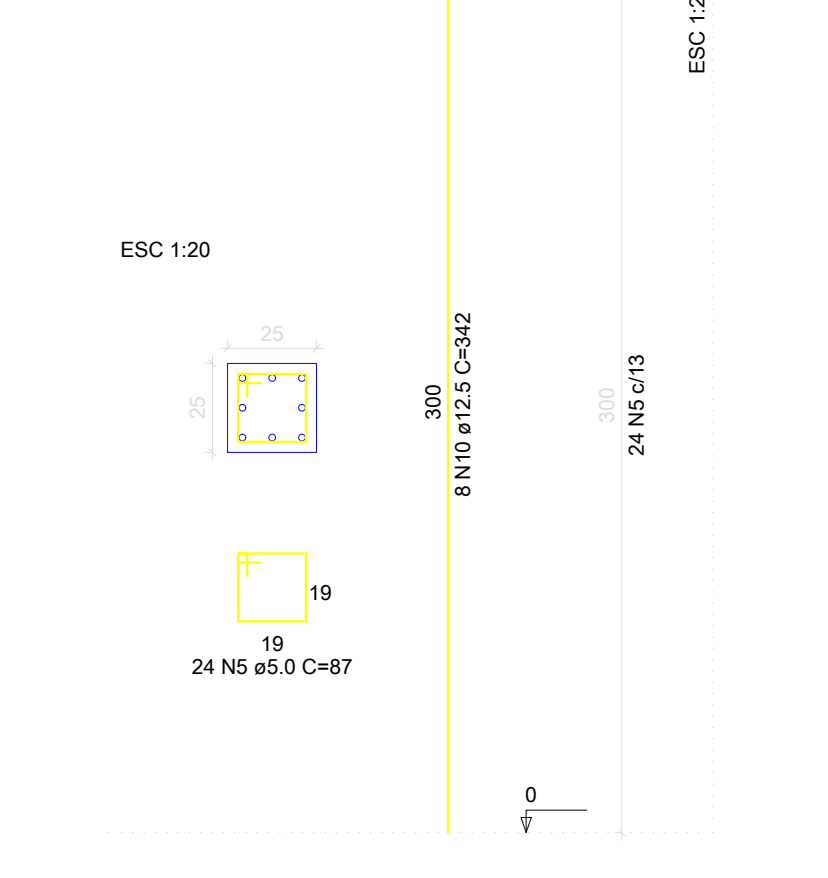
P6=P7



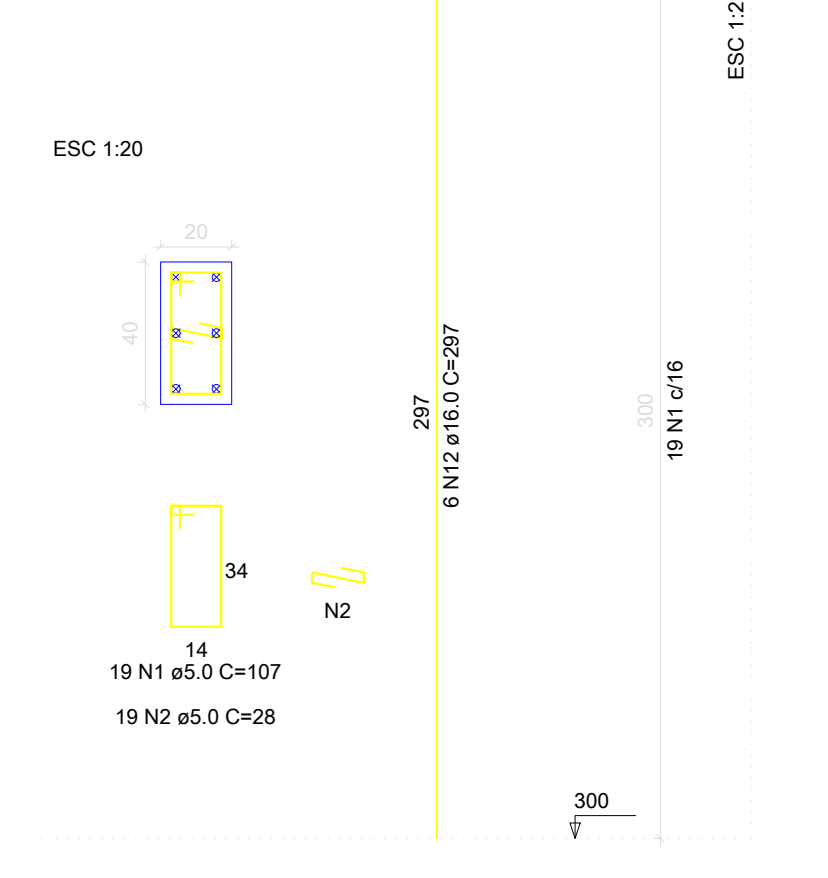
P11



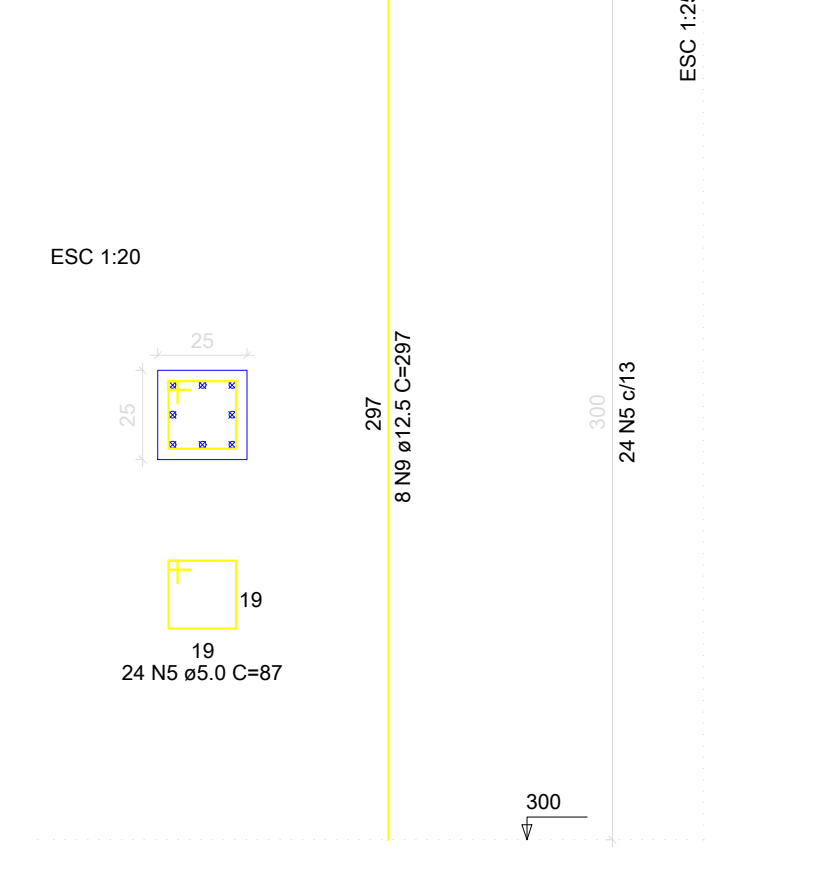
P12



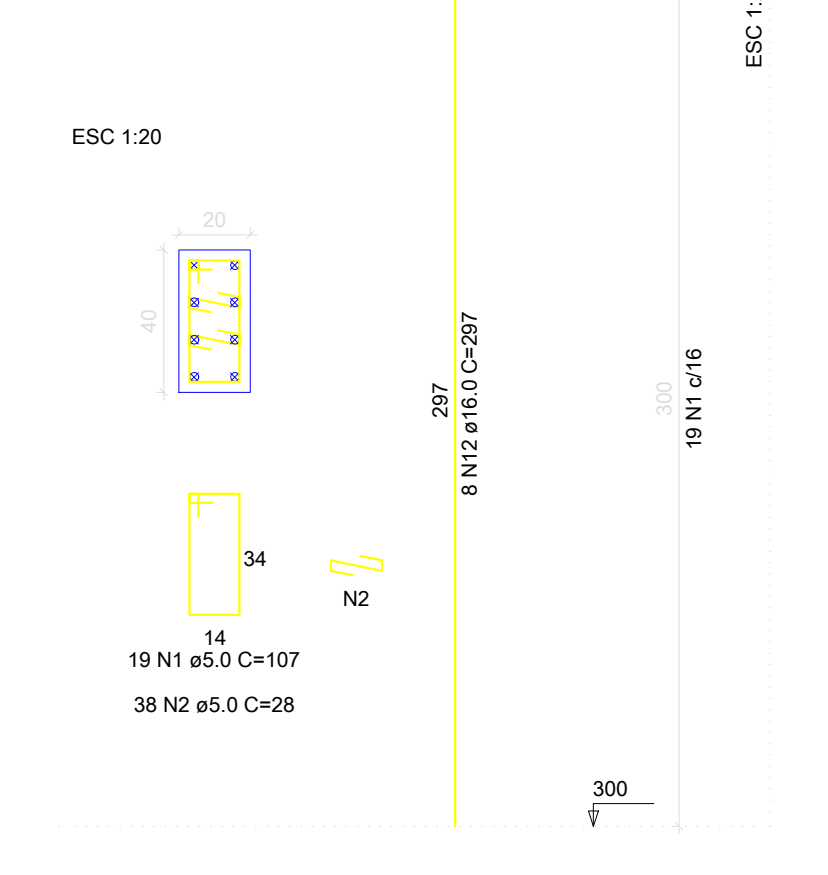
P1



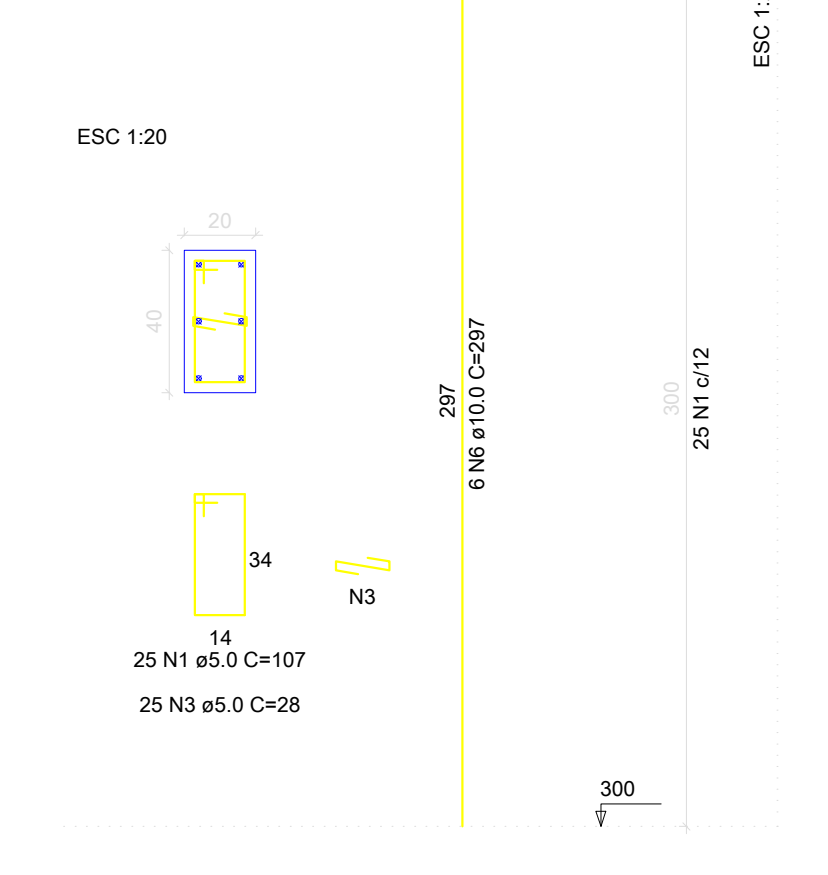
P11=P12



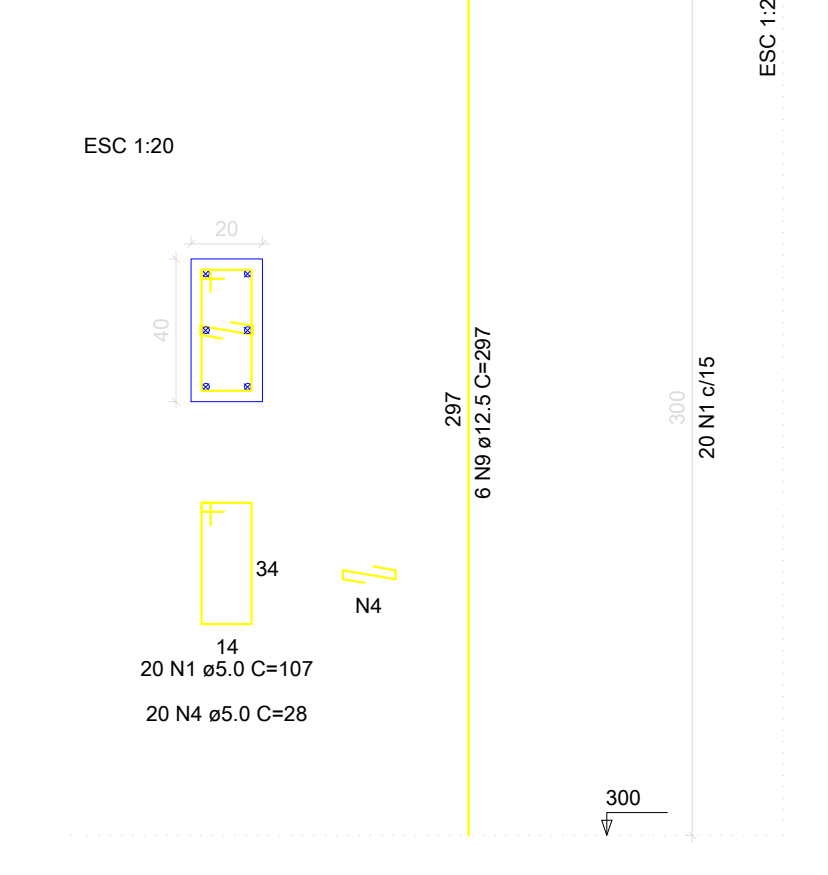
P2



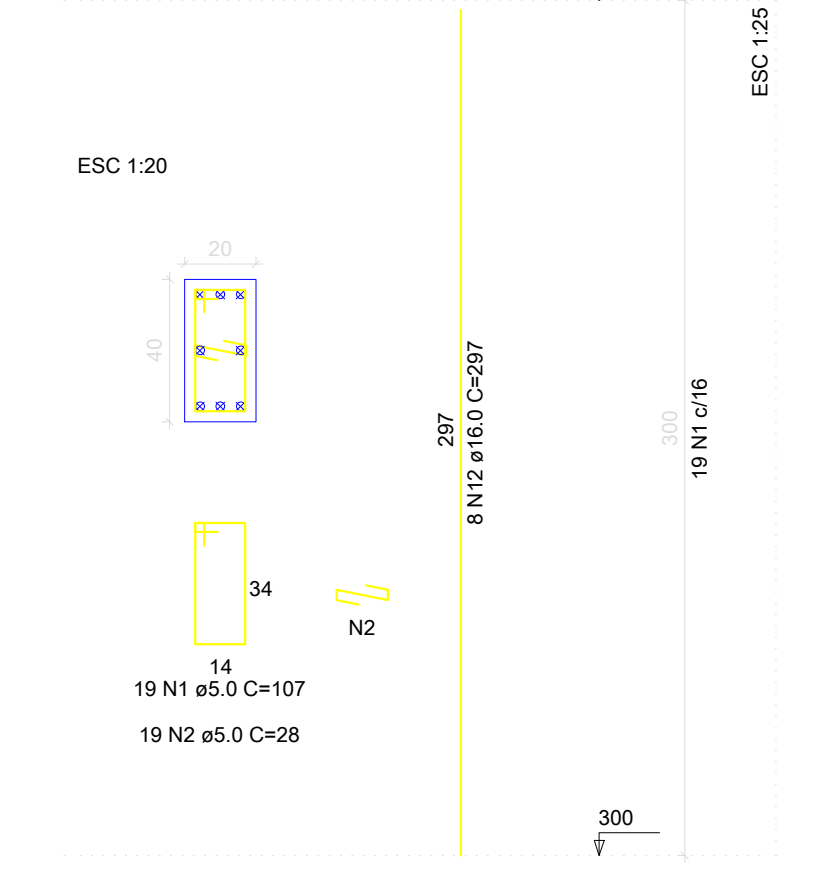
P3



P4=P5=P8=P9=P10



P6=P7



RELAÇÃO DO AÇO

PROJETO	DIAM.	Q.	UNIT.	C.TOTAL
P1-L3	5.0	471	107	50397
5xP4-L3	5.0	222	28	6216
P1-L2	5.0	235	28	6580
5xP4-L2	5.0	107	87	9309
P1-L1	10.0	6	297	1782
P2-L1	10.0	6	333	1998
2xP6-L2	10.0	6	VAR	VAR
P3-L1	12.5	46	297	13662
P4-L1	12.5	46	342	15732
5xP4-L1	12.5	46	VAR	VAR
P11-L1	16.0	30	353	10590
P12-L1	16.0	30	VAR	VAR

RESUMO DO AÇO

AÇO	DIAM.	C.TOTAL (m)	PESO+10% (kg)
CA50	10.0	46.8	31.8
	12.5	367.1	389.3
	16.0	246.8	427.2
CA60	5.0	743.0	125.8

PESO TOTAL
CA50 848.2
CA60 125.8

Vol. de concreto total (C-30) = 6.47 m³
Área de forma total = 98.00 m²



MUNICÍPIO DE NOVA BASSANO

SECRETARIA MUNICIPAL DE OBRAS E VIAÇÃO
DEPARTAMENTO TÉCNICO

REFORMAS E AMPLIAÇÃO NA ESCOLA MUNICIPAL TEODOLINDA REGINATTO
Estrutural - Pilares - Prumadas

Unidade:
centímetros

Resp. Municipal:
Prefeito Municipal Ivaldo Dalla Costa

Profissional Técnico:
Eng. Civil, Esp. Felipe Zortea CREA-RS209470

Data:
Julho/2021

Versão:
4

Prancha:
24/25

Escala:
1/100