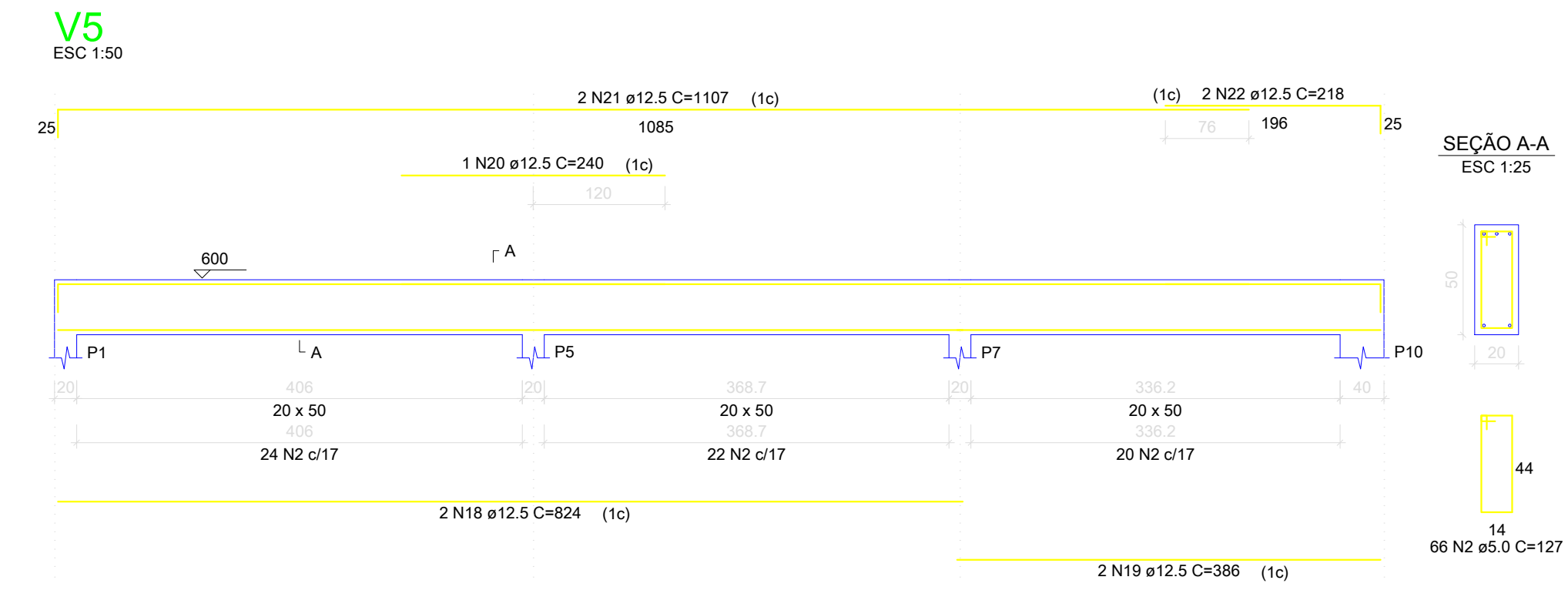
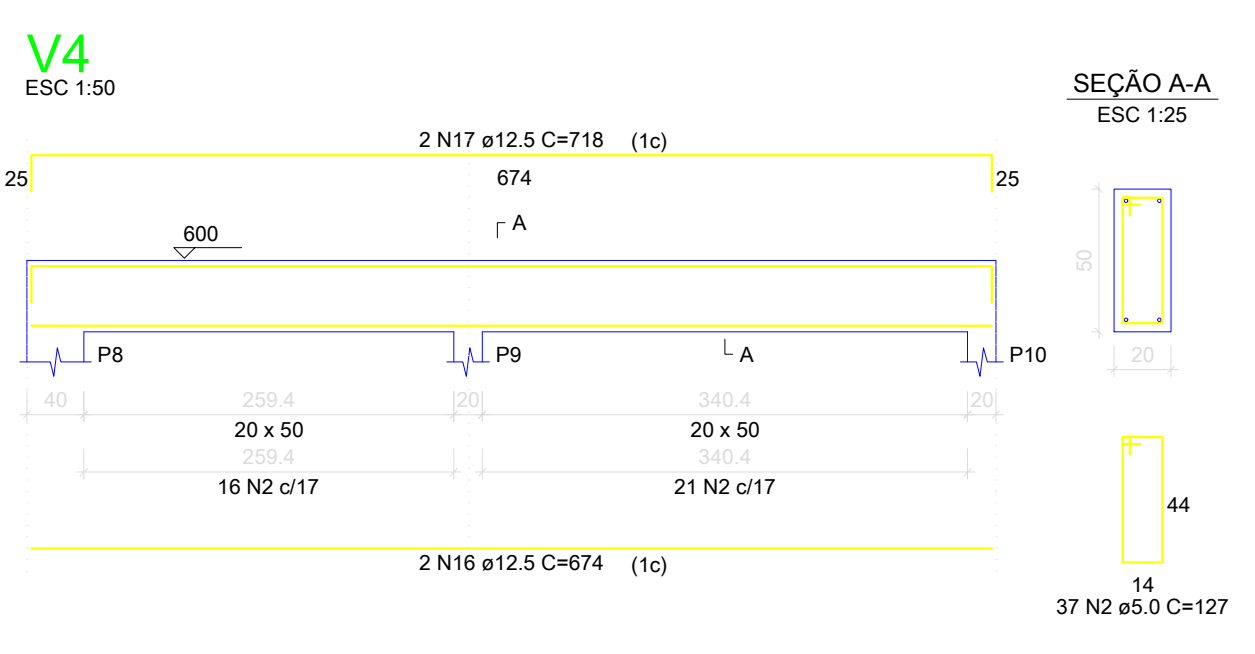


RELAÇÃO DO AÇO

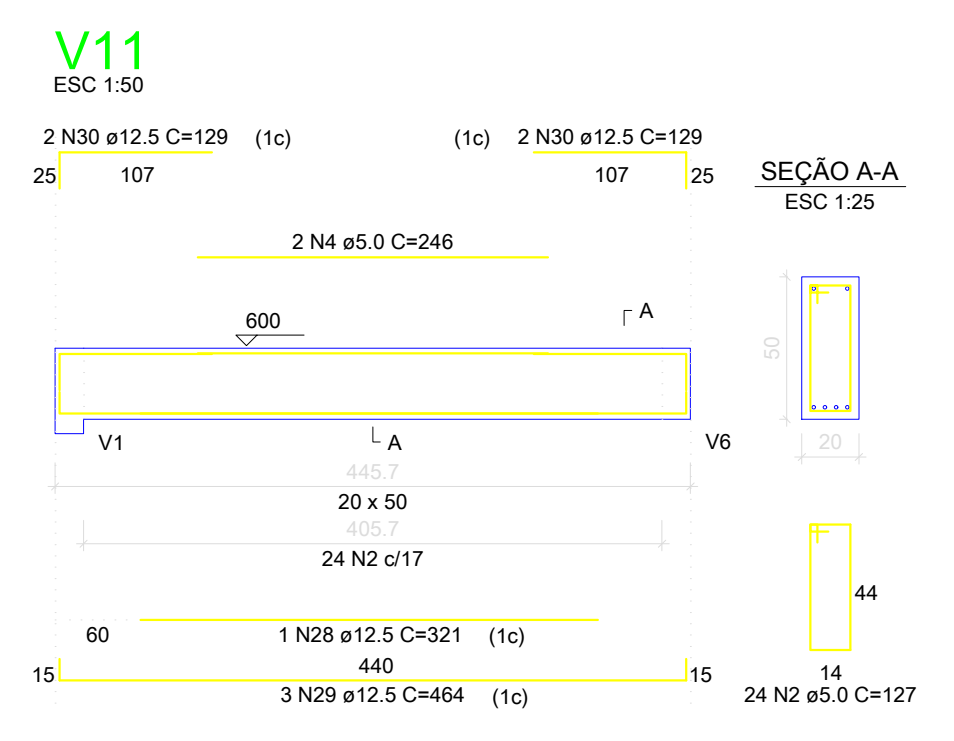
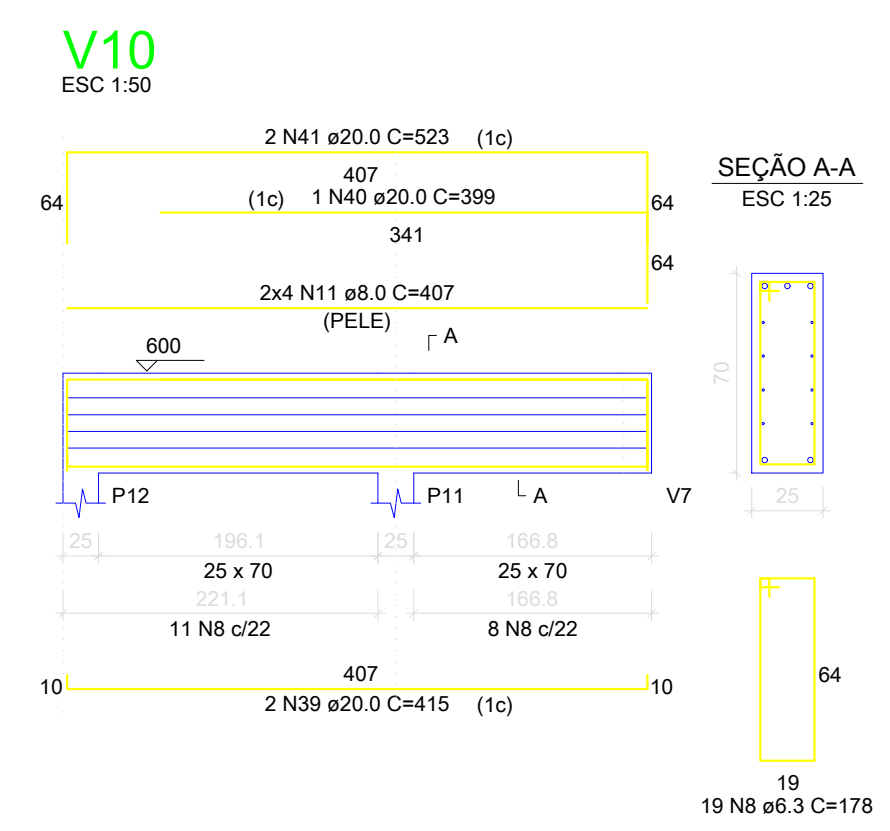
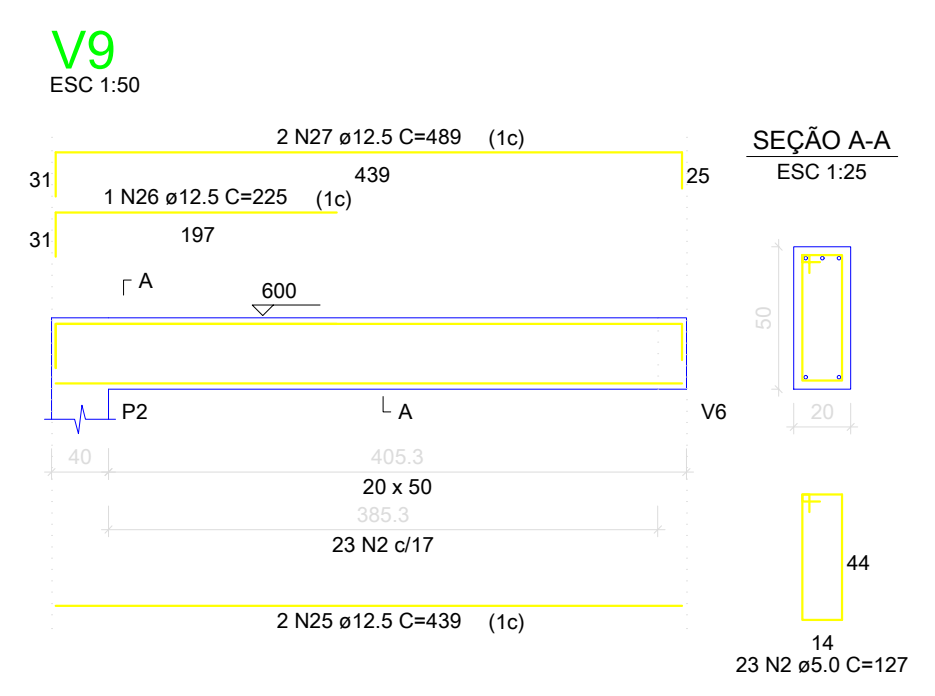
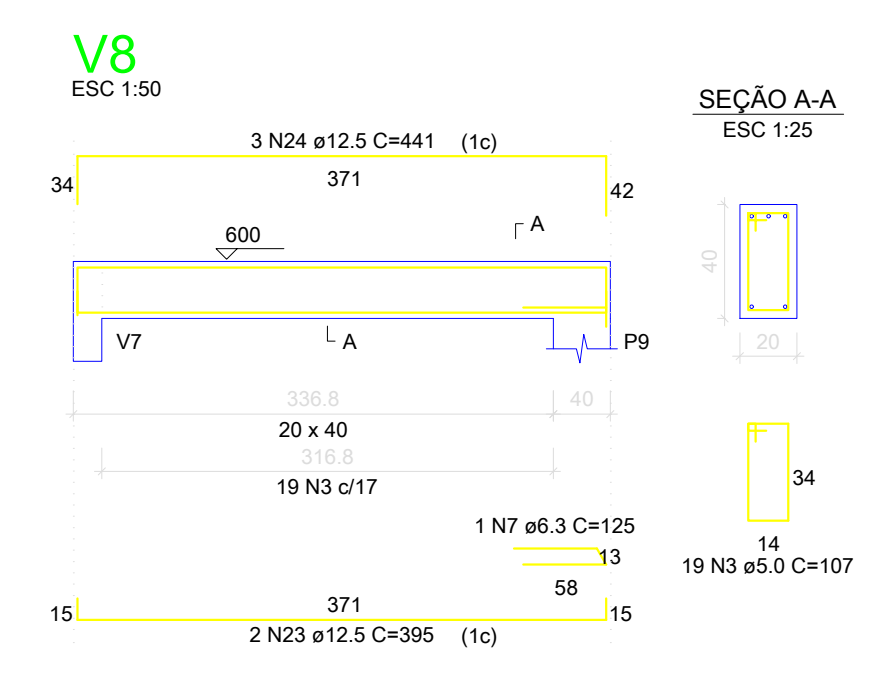
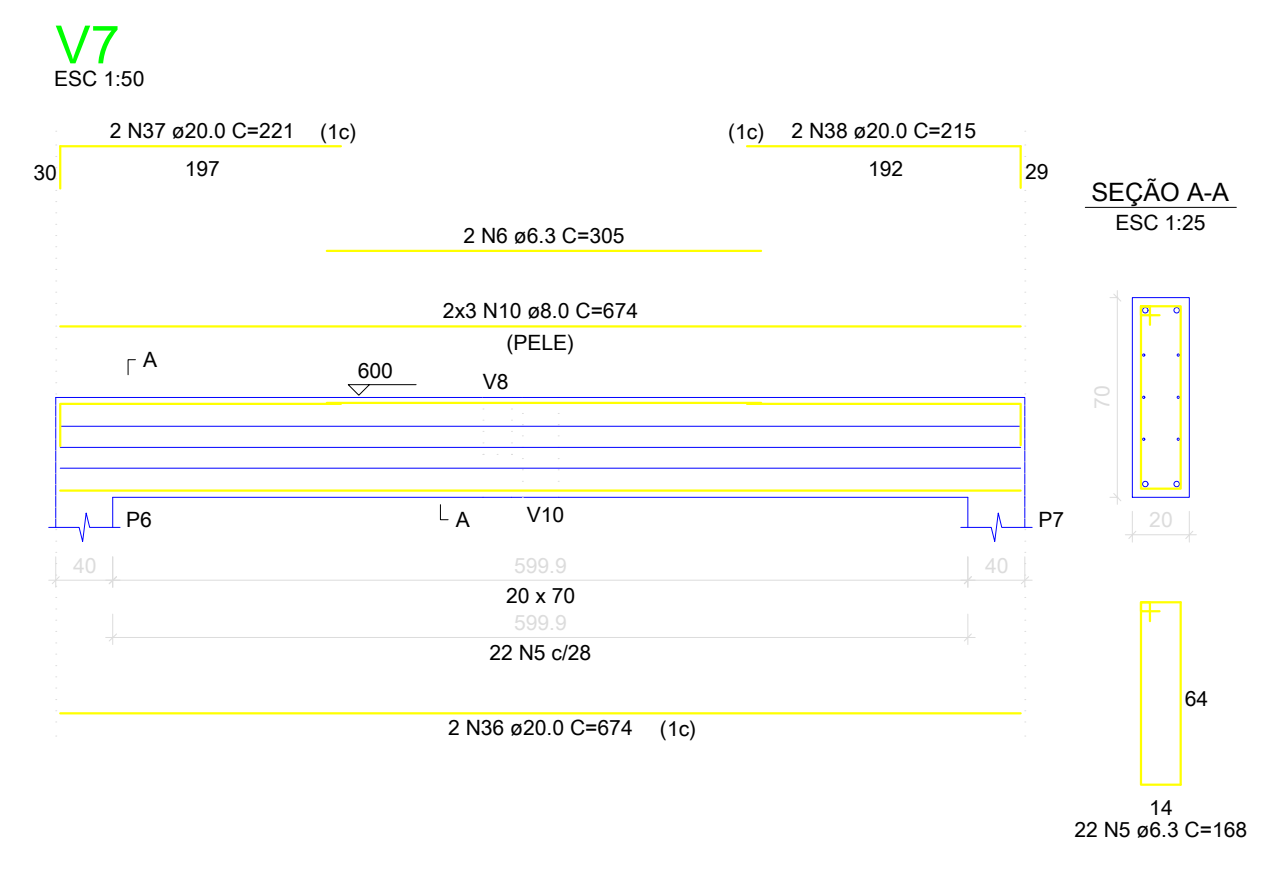
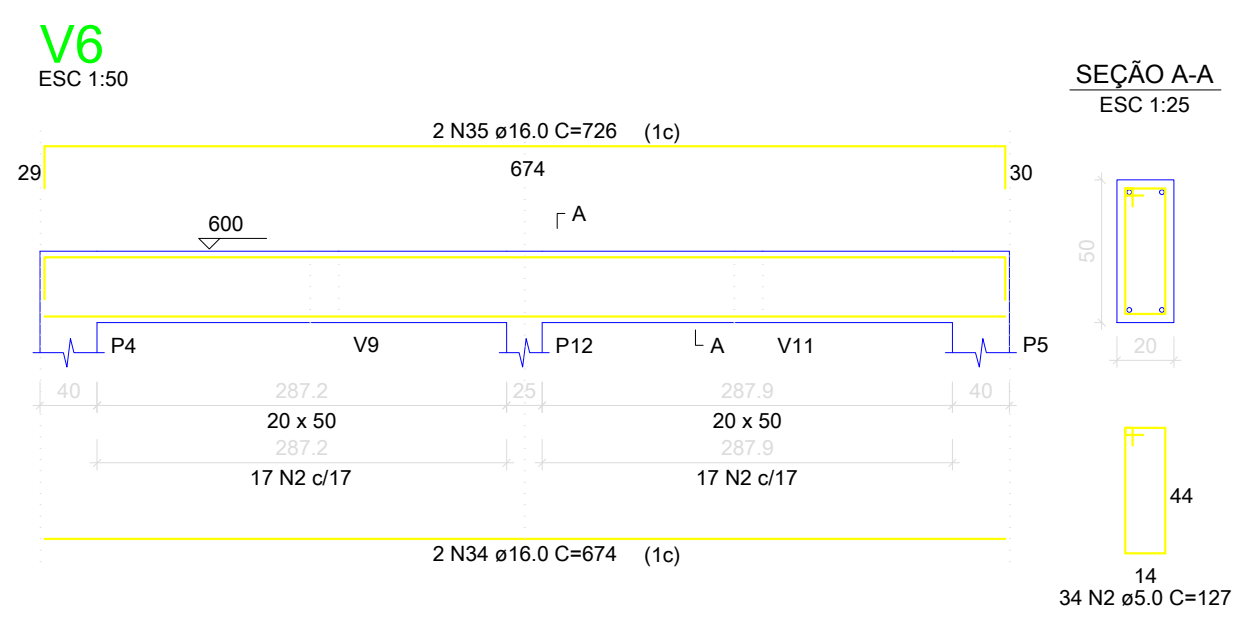
AÇO	N	DIAM	Q	UNIT (cm)	C.TOTAL (cm)
V1	1	5.0	26	147	3822
V4	2	5.0	255	127	32385
V7	3	5.0	18	107	2033
V10	4	5.0	2	246	492
	5	6.3	22	188	3696
	6	6.3	2	305	610
	7	6.3	1	125	125
	8	6.3	19	178	3382
	9	8.0	8	485	2910
	10	8.0	6	674	4044
	11	8.0	8	407	3256
	12	12.5	2	325	650
	13	12.5	2	369	738
	14	12.5	2	938	1876
	15	12.5	2	892	1784
	16	12.5	2	674	1348
	17	12.5	2	718	1436
	18	12.5	2	824	1648
	19	12.5	2	386	772
	20	12.5	1	240	240
	21	12.5	2	1107	2214
	22	12.5	2	218	436
	23	12.5	2	395	790
	24	12.5	3	441	1323
	25	12.5	2	439	878
	26	12.5	1	225	225
	27	12.5	2	489	978
	28	12.5	1	321	321
	29	12.5	3	464	1392
	30	12.5	4	129	516
	31	16.0	1	331	331
	32	16.0	2	516	1032
	33	16.0	2	539	1078
	34	16.0	2	674	1348
	35	16.0	2	726	1452
	36	20.0	2	674	1348
	37	20.0	2	221	442
	38	20.0	2	215	430
	39	20.0	2	415	830
	40	20.0	1	399	399
	41	20.0	2	523	1046



RESUMO DO AÇO

AÇO	DIAM	C.TOTAL (m)	PESO+10% (kg)
CA50	6.3	78.0	21.0
	8.0	102.1	44.4
	12.5	197.5	209.4
	16.0	32.4	91.0
	20.0	45.0	122.1
CA60	5.0	388.6	65.9
PESO TOTAL			
CA50		488.0	
CA60		65.9	

Vol. de concreto total (C-30) = 7.3 m³
Área de forma total = 85.17 m²



MUNICÍPIO DE NOVA BASSANO

SECRETARIA MUNICIPAL DE OBRAS E VIAÇÃO
DEPARTAMENTO TÉCNICO

Unidade:
centímetros

REFORMAS E AMPLIAÇÃO NA ESCOLA MUNICIPAL TEODOLINDA REGINATTO
Estrutural - Vigas - Pavimento Laje Superior

Resp. Municipal:
Prefeito Municipal Ivaldo Dalla Costa

Profissional Técnico:
Eng. Civil, Esp. Felipe Zortea CREA-RS209470

Data:
Julho/2021

Versão:
4

Prancha:
22/25

Escala:
1/100