

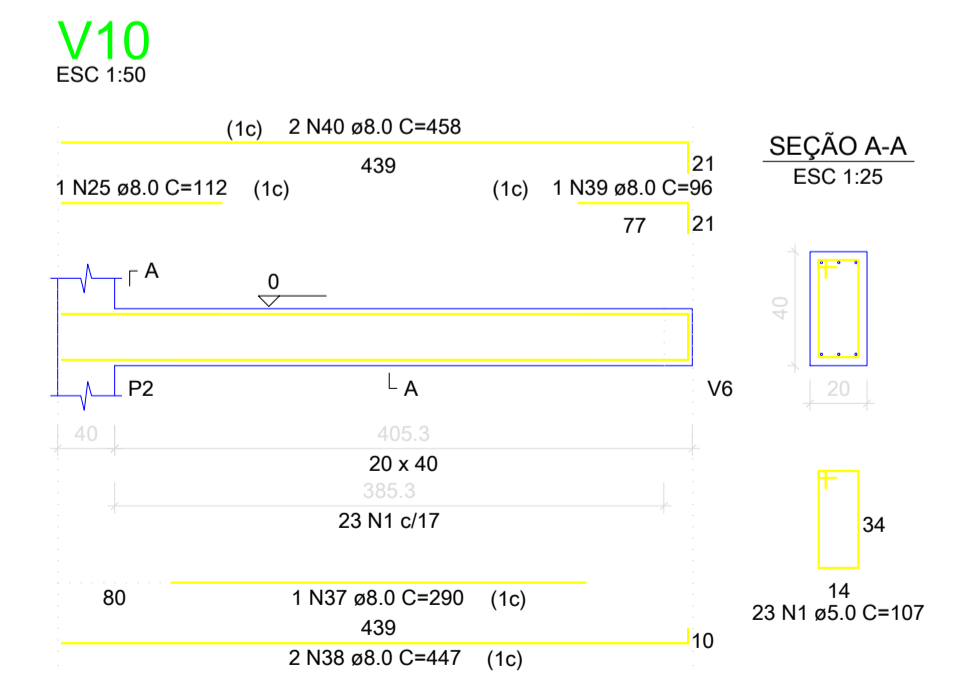
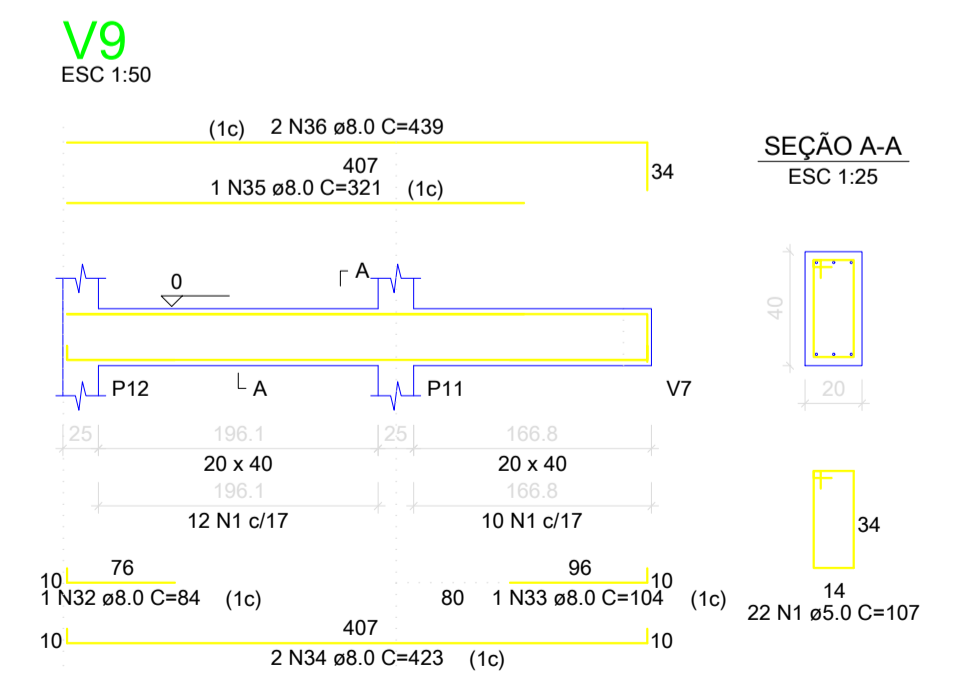
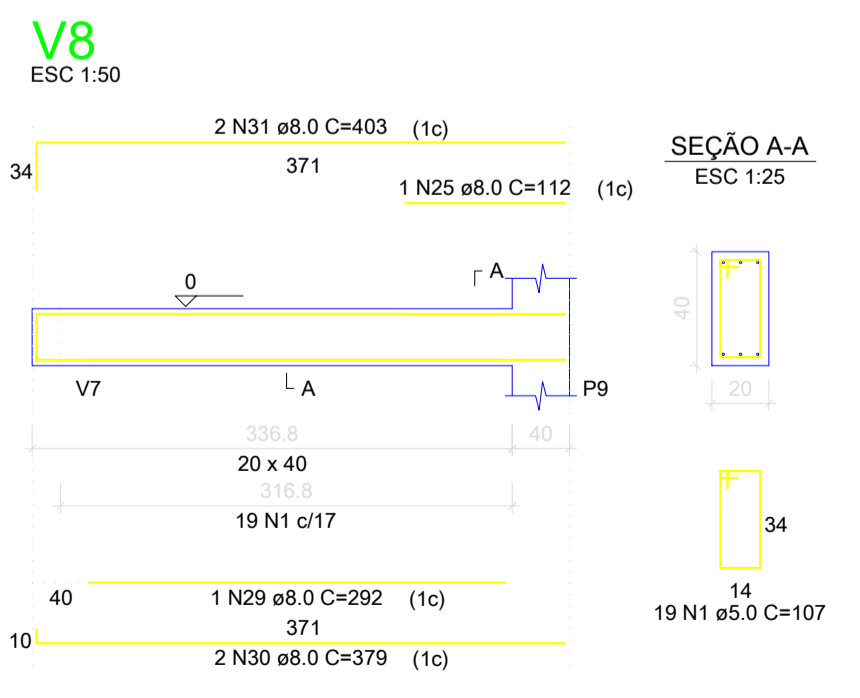
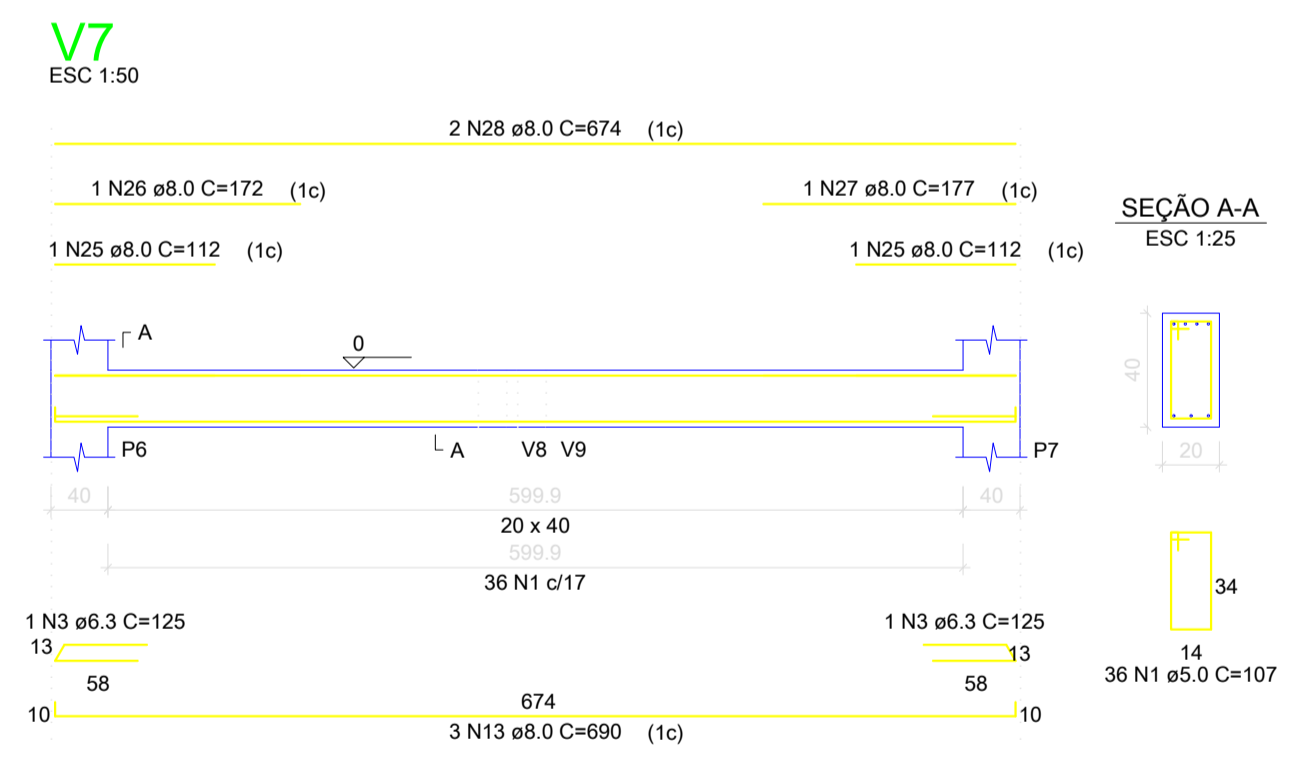
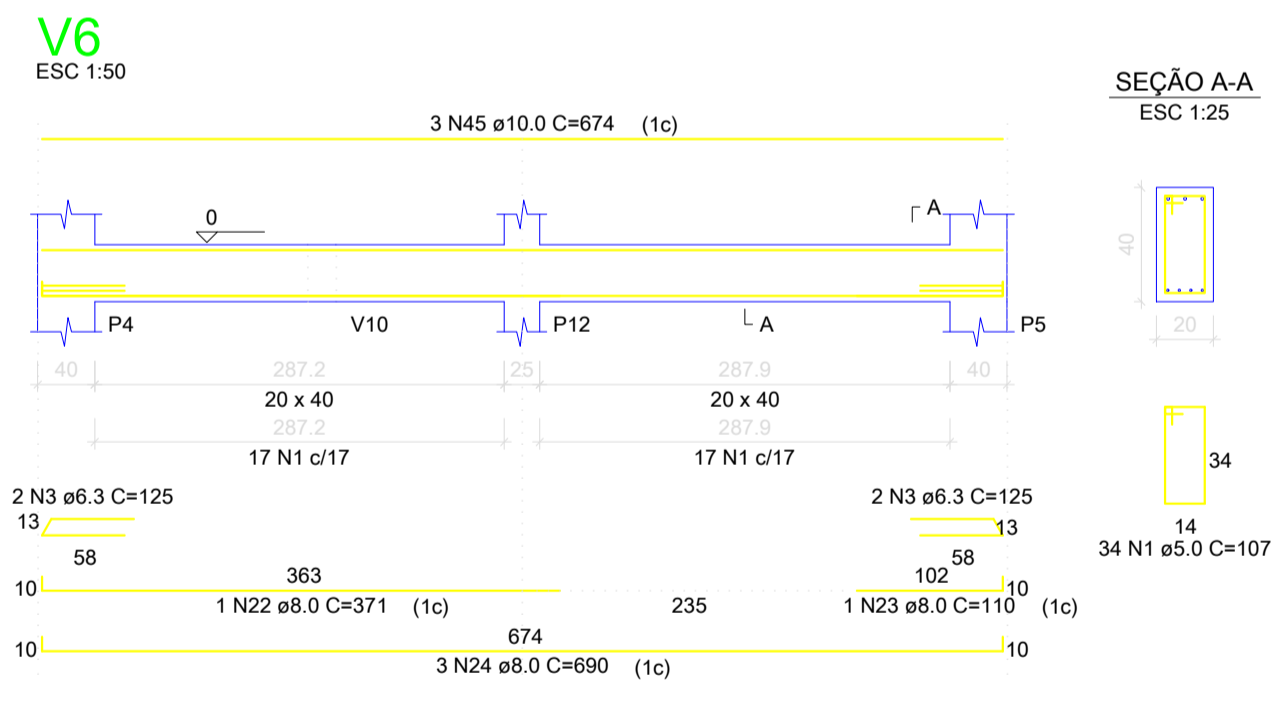
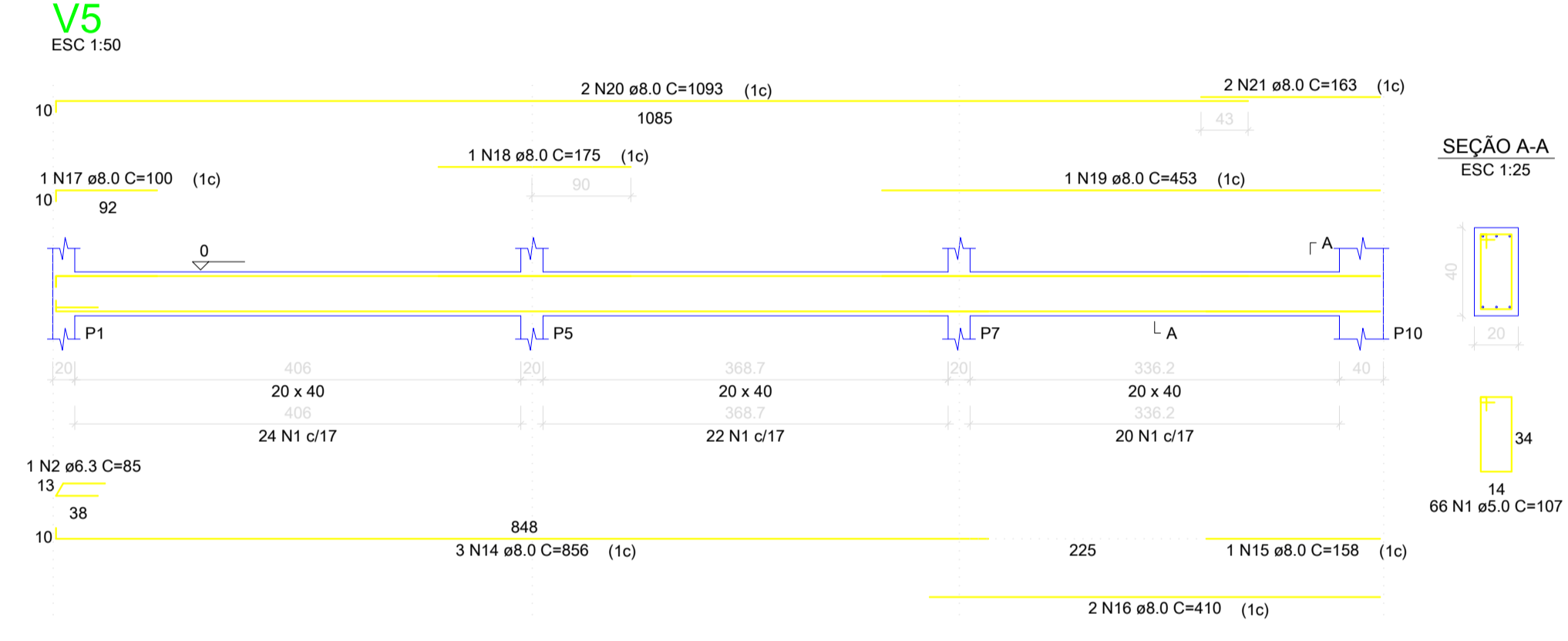
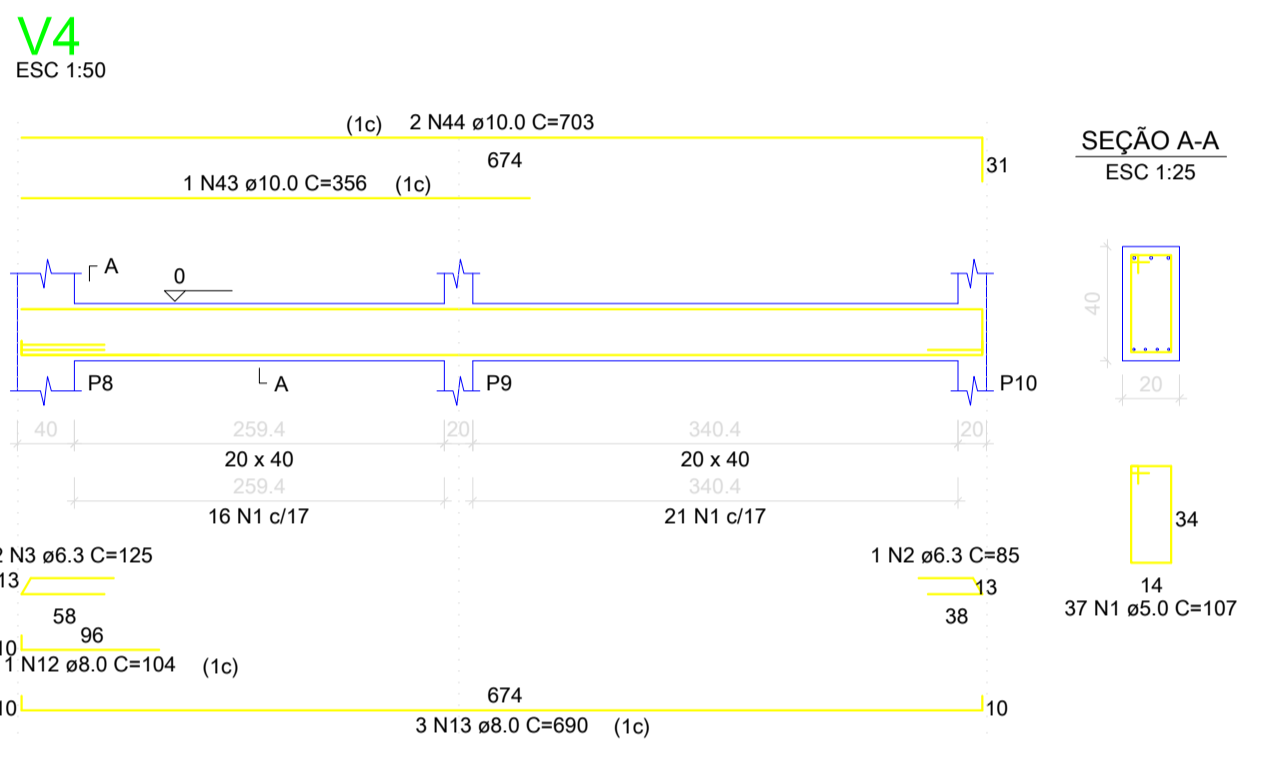
RELAÇÃO DO AÇO

AÇO	N	DIAM	Q	UNIT (cm)	C.TOTAL (cm)
60	1	5.0	334	107	35738
50	2	6.3	4	85	340
	3	6.3	9	125	1125
	4	6.3	2	87	174
	5	8.0	3	501	1503
	6	8.0	8	341	2048
	7	8.0	1	213	213
	8	8.0	1	689	689
	9	8.0	4	946	3784
	10	8.0	1	236	236
	11	8.0	1	442	442
	12	8.0	1	104	104
	13	8.0	6	890	4140
	14	8.0	3	856	2568
	15	8.0	1	158	158
	16	8.0	2	410	820
	17	8.0	1	100	100
	18	8.0	1	175	175
	19	8.0	1	453	453
	20	8.0	2	1093	2186
	21	8.0	2	163	326
	22	8.0	1	371	371
	23	8.0	1	110	110
	24	8.0	3	890	2070
	25	8.0	4	112	448
	26	8.0	1	172	172
	27	8.0	1	177	177
	28	8.0	2	674	1348
	29	8.0	1	292	292
	30	8.0	2	379	758
	31	8.0	2	403	806
	32	8.0	1	84	84
	33	8.0	1	104	104
	34	8.0	2	423	846
	35	8.0	1	321	321
	36	8.0	2	439	878
	37	8.0	1	290	290
	38	8.0	2	447	894
	39	8.0	1	96	96
	40	8.0	2	458	916
	41	10.0	1	121	121
	42	10.0	2	516	1032
	43	10.0	1	356	356
	44	10.0	2	703	1406
	45	10.0	3	674	2022

RESUMO DO AÇO

AÇO	DIAM	C.TOTAL (m)	PESO+10% (kg)
CA50	6.3	16.4	4.4
	8.0	309.2	134.4
	10.0	49.5	33.6
CA60	5.0	359.0	80.8
PESO TOTAL			
CA50		172.4	
CA60		60.8	

Vol. de concreto total (C-30) = 6 m³
Área de forma total = 62.51 m²



MUNICÍPIO DE NOVA BASSANO

SECRETARIA MUNICIPAL DE OBRAS E VIAÇÃO
DEPARTAMENTO TÉCNICO

Unidade:
centímetros

REFORMAS E AMPLIAÇÃO NA ESCOLA MUNICIPAL TEODOLINDA REGINATTO
Estrutural - Vigas travamento base - Pavimento Fundações

Resp. Municipal:
Prefeito Municipal Ivaldo Dalla Costa

Profissional Técnico:
Eng. Civil, Esp. Felipe Zortea CREA-RS209470

Data:
Julho/2021

Versão:
4

Prancha:
18/25

Escala:
1/100