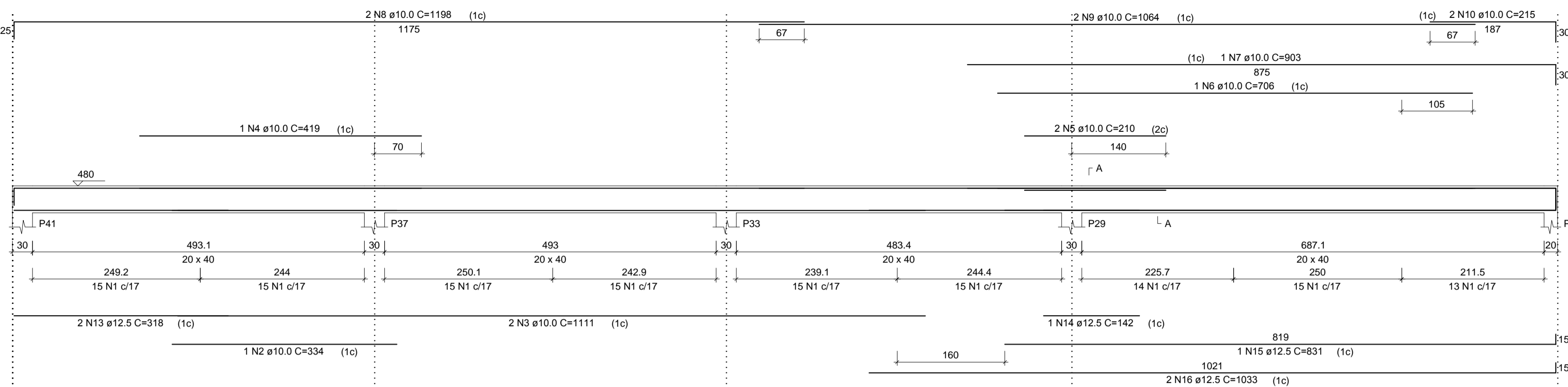
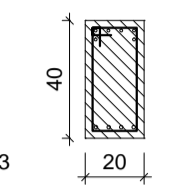


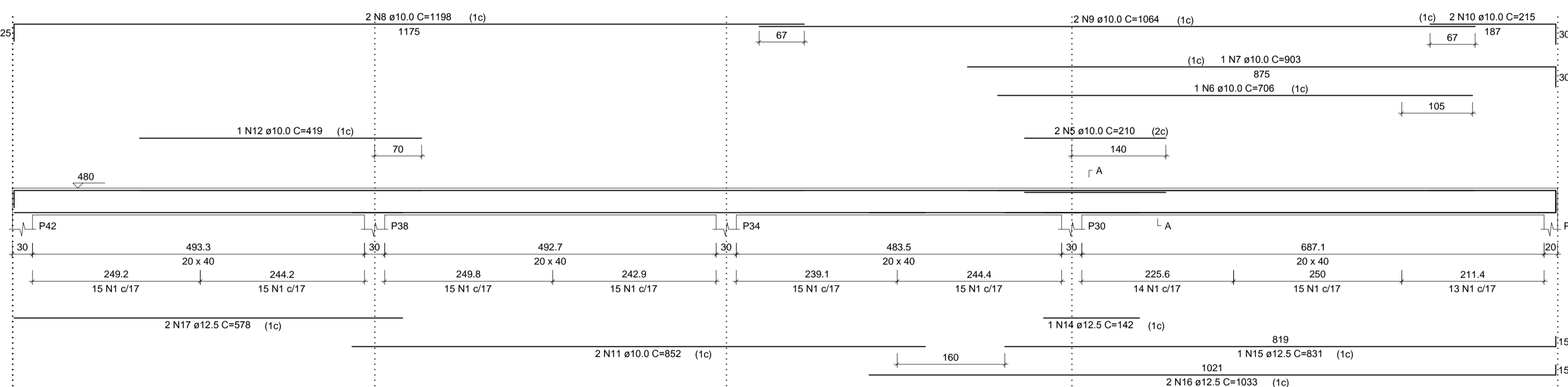
V9
ESC 1:50



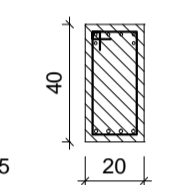
SEÇÃO A-A
ESC 1:25



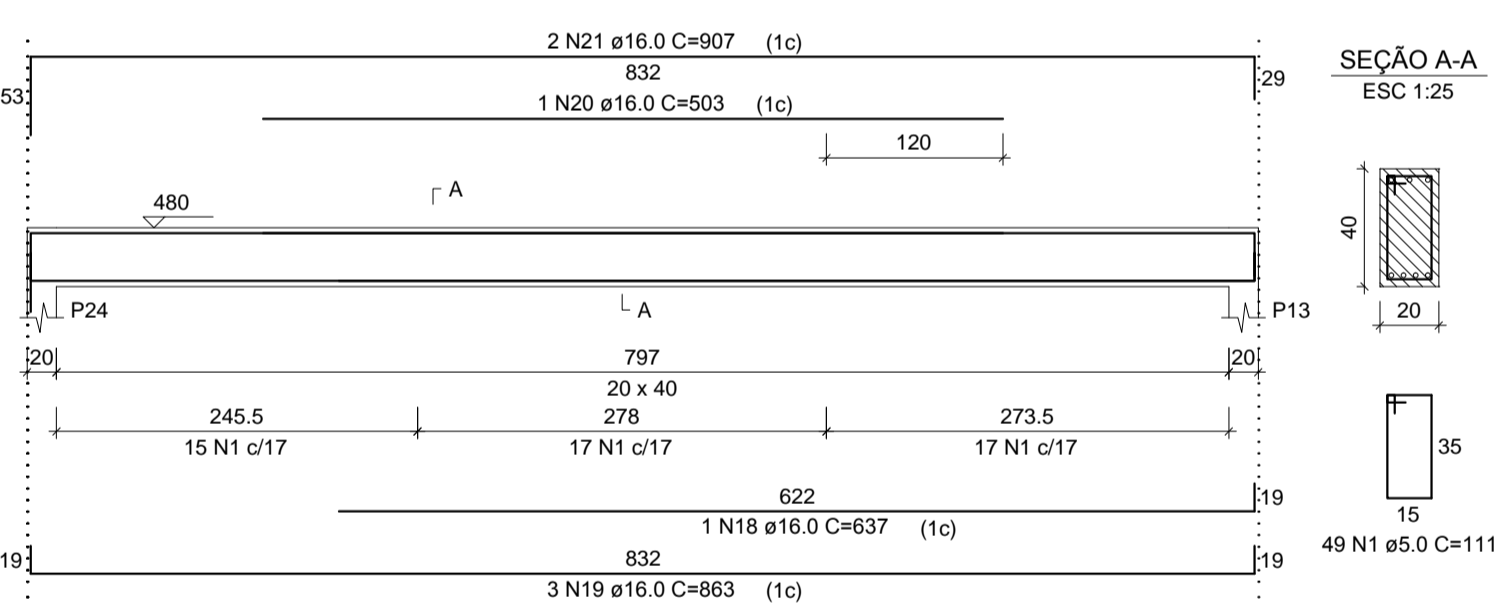
V10
ESC 1:50



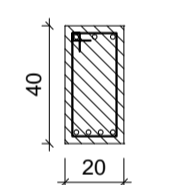
SEÇÃO A-A
ESC 1:25



V11
ESC 1:50



SEÇÃO A-A
ESC 1:25



RELAÇÃO DO AÇO

AÇO	N	DIAM (mm)	QUANT	C.UNIT (cm)	C.TOTAL (cm)
CA60	1	5.0	313	111	34743
CA50	2	10.0	1	334	334
	3	10.0	2	1111	2222
	4	10.0	1	419	419
	5	10.0	4	210	840
	6	10.0	2	706	1412
	7	10.0	2	903	1806
	8	10.0	4	1198	4792
	9	10.0	4	1064	4256
	10	10.0	4	215	860
	11	10.0	2	852	1704
	12	10.0	1	419	419
	13	12.5	2	318	636
	14	12.5	2	142	284
	15	12.5	2	831	1662
	16	12.5	4	1033	4132
	17	12.5	2	578	1156
	18	16.0	1	637	637
	19	16.0	3	863	2589
	20	16.0	1	503	503
	21	16.0	2	907	1814

RESUMO DO AÇO

AÇO	DIAM (mm)	C.TOTAL (m)	PESO + 10% (kg)
CA50	10.0	190.6	129.3
	12.5	78.7	83.4
CA60	16.0	55.4	96.2
	5.0	347.4	58.9
PESO TOTAL (kg)			
CA50		308.9	
CA60		58.9	

Volume de concreto (C-30) = 4.34 m³
Área de forma = 54.30 m²

PROJETO ESTRUTURAL

CTG Pousada do Imigrante

PAVIMENTO NÍVEL 2
VIGAS

Escala: 1/50	DESENHO	01
Desenho:	Revisão: 0	FOLHA
Data: 14/09/18	Unidade: cm	01/01

Gustavo Ribeiro da Silva
Engenheiro Civil, M.Sc.
CREA/RJ 208.184
54 - 9 81390048