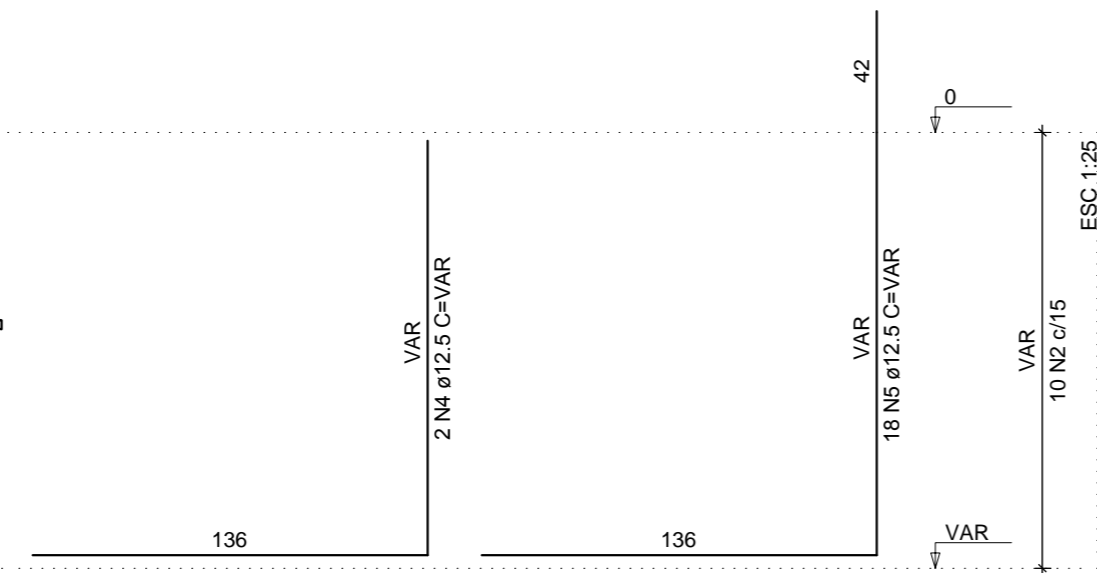
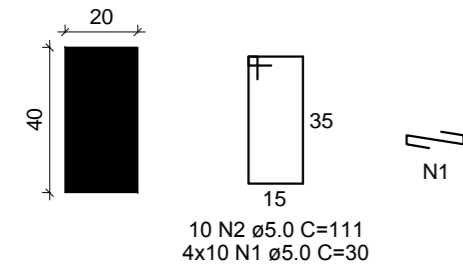


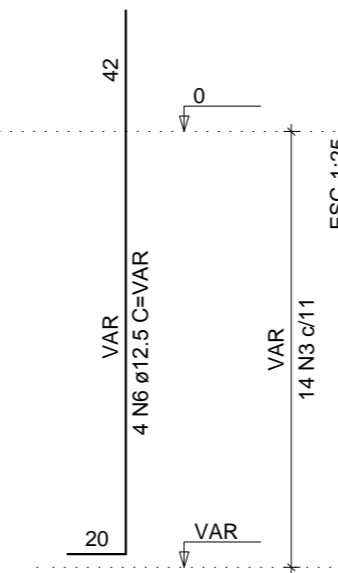
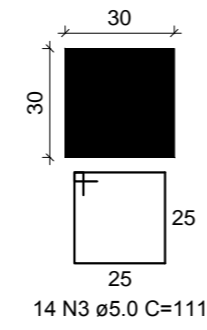
P24

BALDRAME - L1  
ESC 1:20



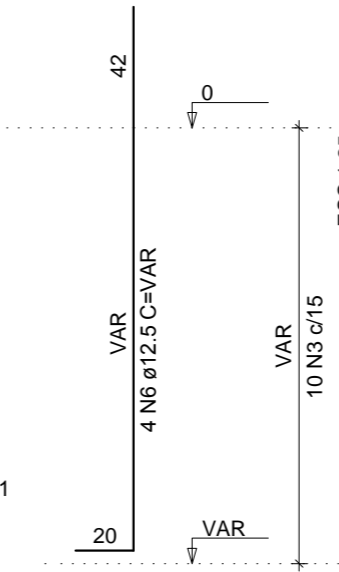
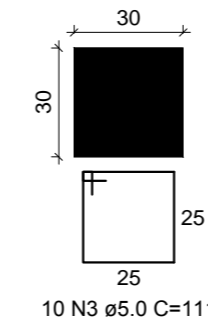
P29=P30=P33=P34=P37=P38=  
=P41=P42

BALDRAME - L1  
ESC 1:20



P44=P48=P49

BALDRAME - L1  
ESC 1:20



RELAÇÃO DO AÇO

AÇO	N	DIAM (mm)	QUANT	C.UNIT (cm)	C.TOTAL (cm)
CA60	1	5.0	40	30	1200
	2	5.0	10	111	1110
	3	5.0	142	111	15762
CA50	4	12.5	2	VAR	VAR
	5	12.5	18	VAR	VAR
	6	12.5	44	VAR	VAR

RESUMO DO AÇO

AÇO	DIAM (mm)	C.TOTAL (m)	PESO + 10% (kg)
CA50	12.5	153.5	162.7
CA60	5.0	180.7	30.6

PESO TOTAL (kg)

CA50	162.7
CA60	30.6

Volume de concreto (C-30) = 1.61 m³  
Área de forma = 21.60 m²

PROJETO ESTRUTURAL

CTG POUSADA DO IMIGRANTE

PAVIMENTO BALDRAME  
PILARES

Gustavo Ribeiro da Silva

Engenheiro Civil, Me.  
CREA/RS 208.184  
54 - 9.81390048

Escala: 1/50

Desenho:

Data: 14/09/18

Revisão: 0

Unidade: cm

DESENHO

01

FOLHA

02/02