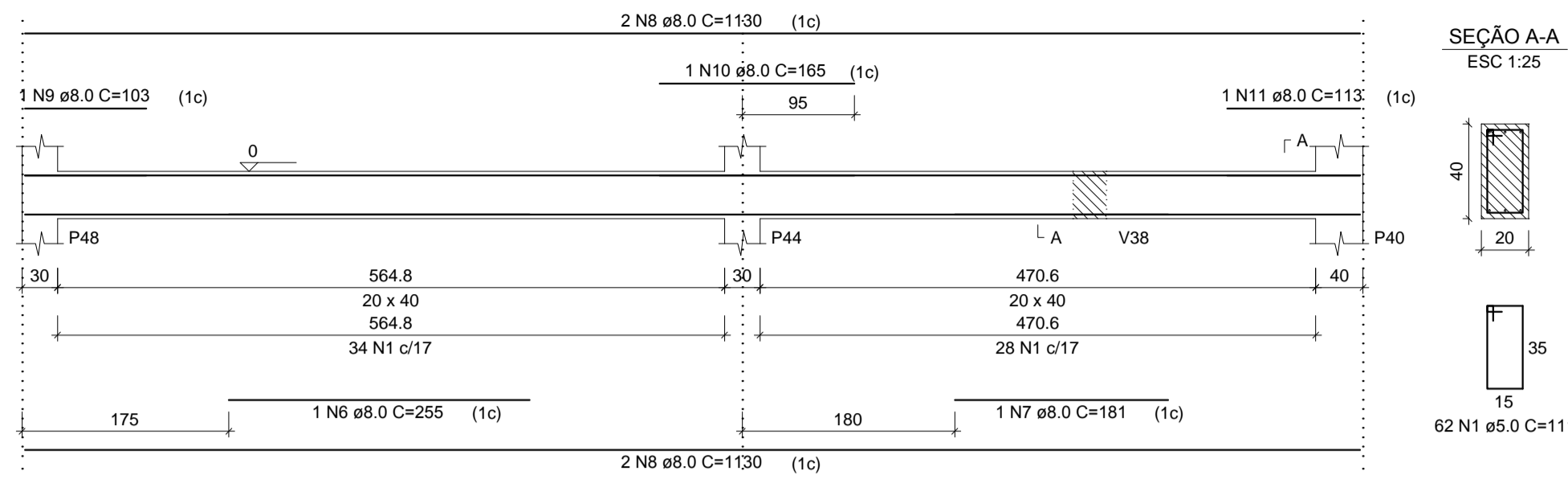
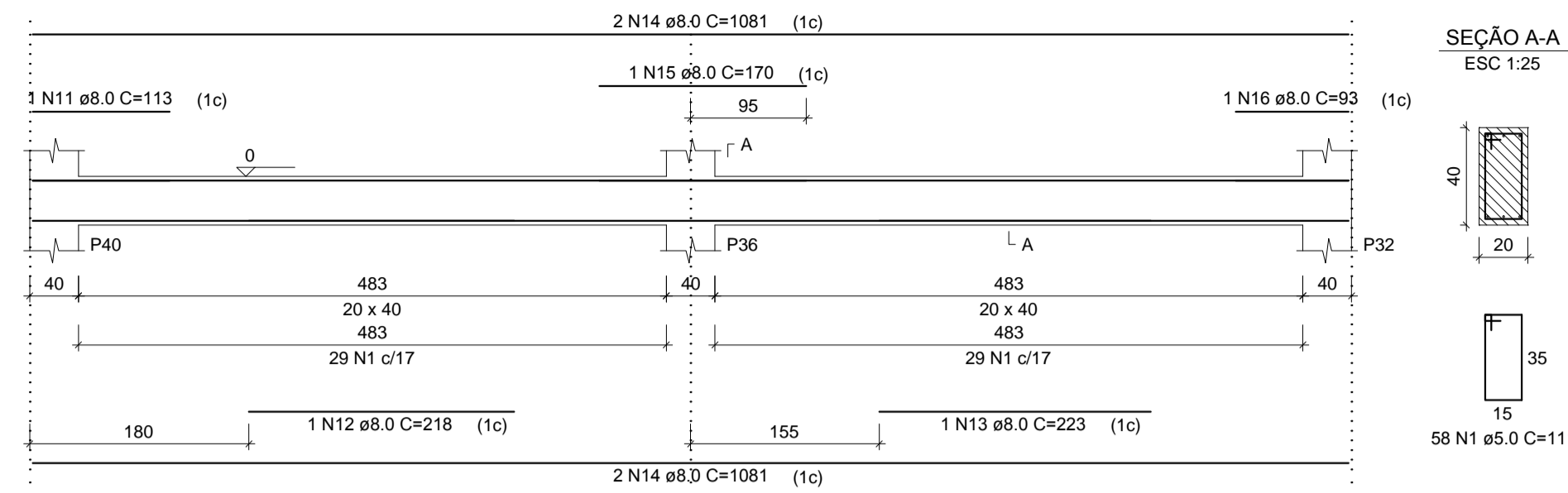


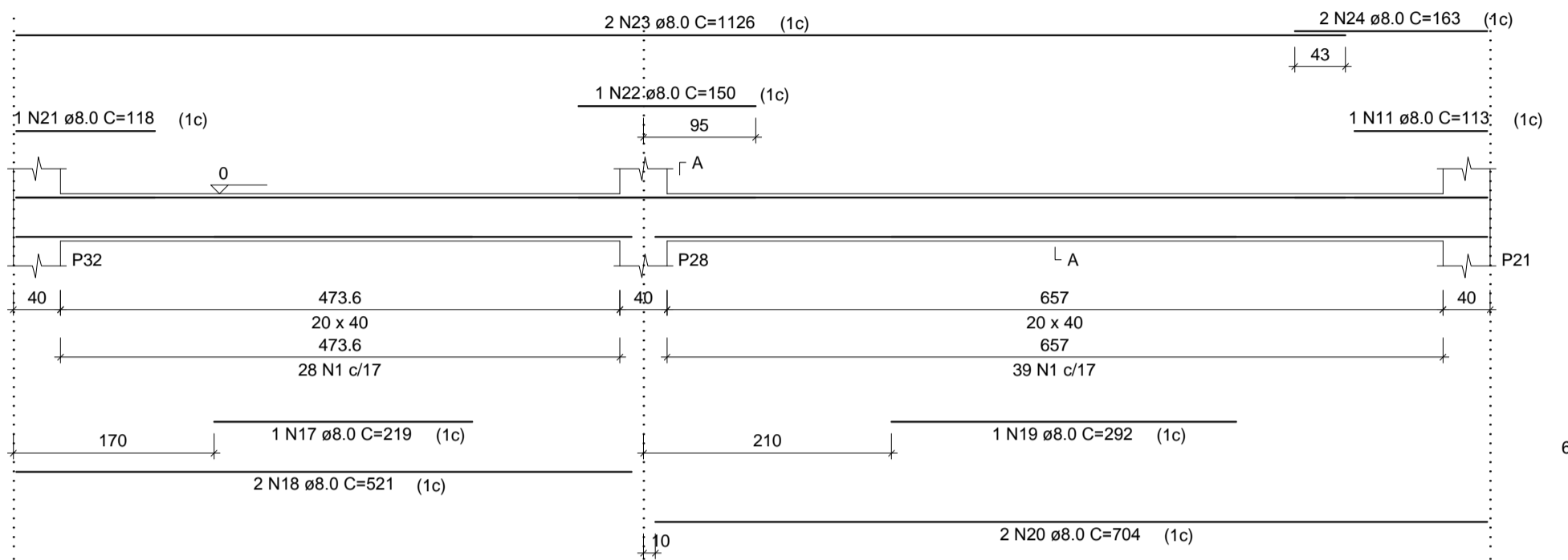
**V22**  
ESC 1:50



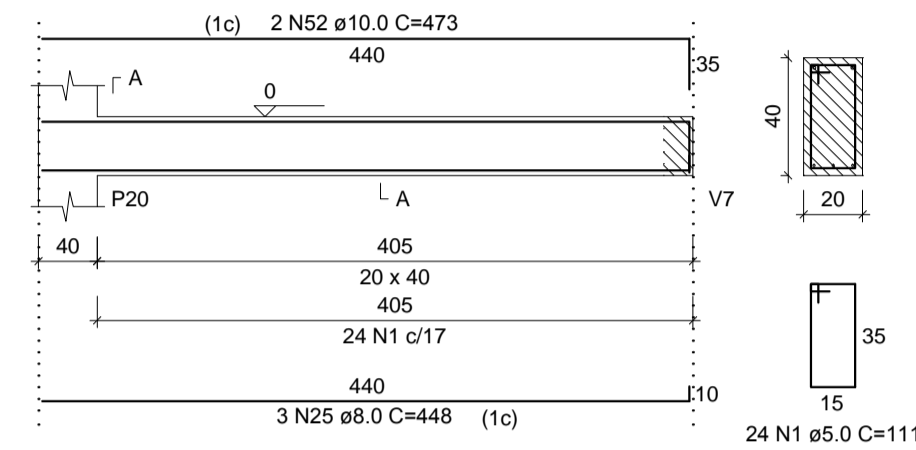
**V23**  
ESC 1:50



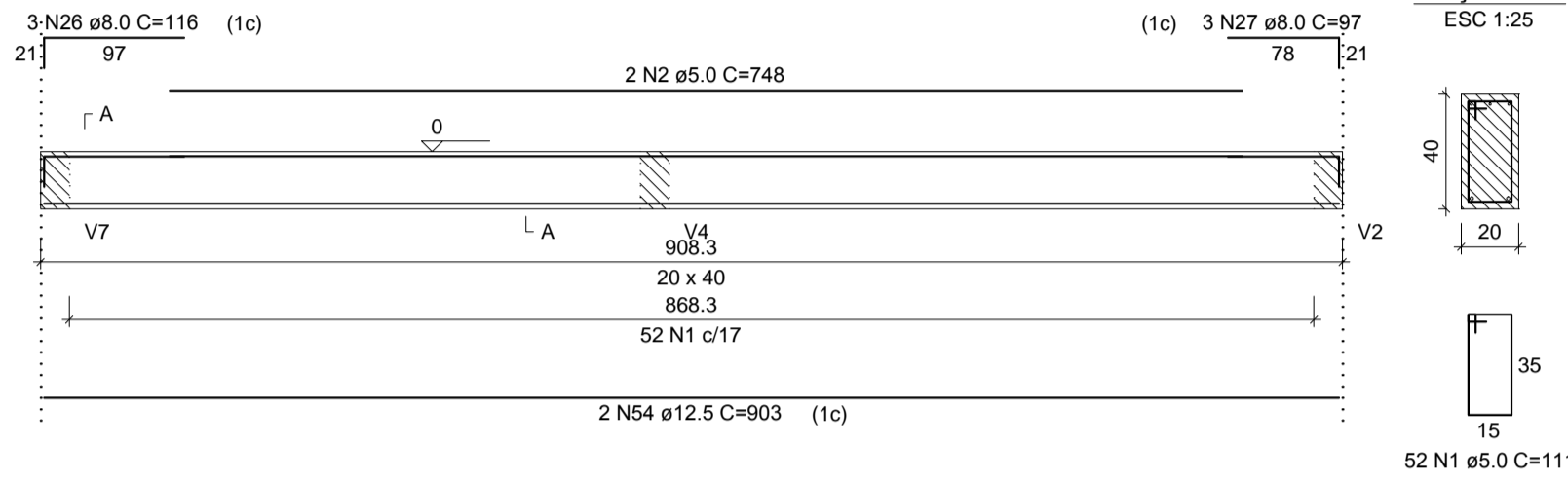
**V24**  
ESC 1:50



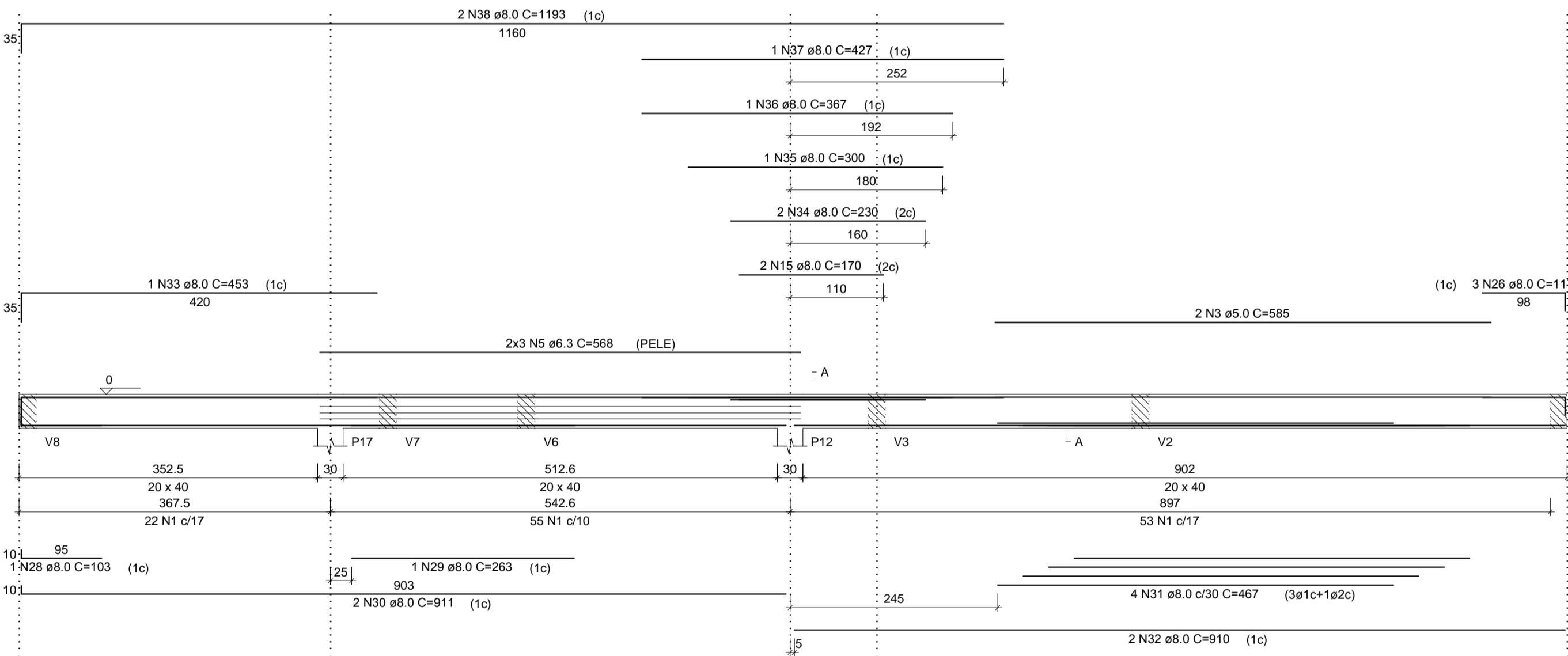
**V25**  
ESC 1:50



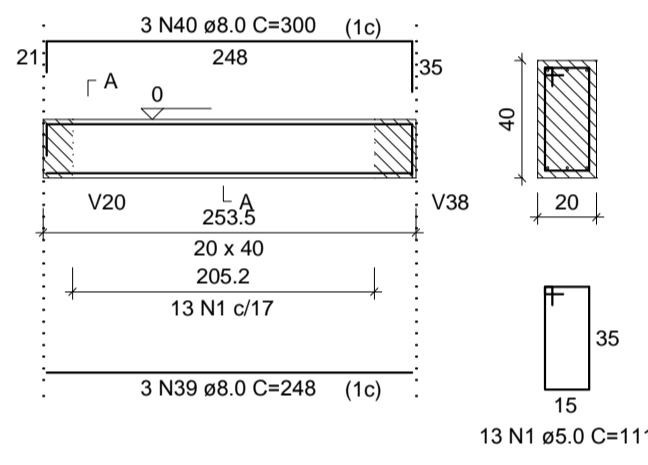
**V26**  
ESC 1:50



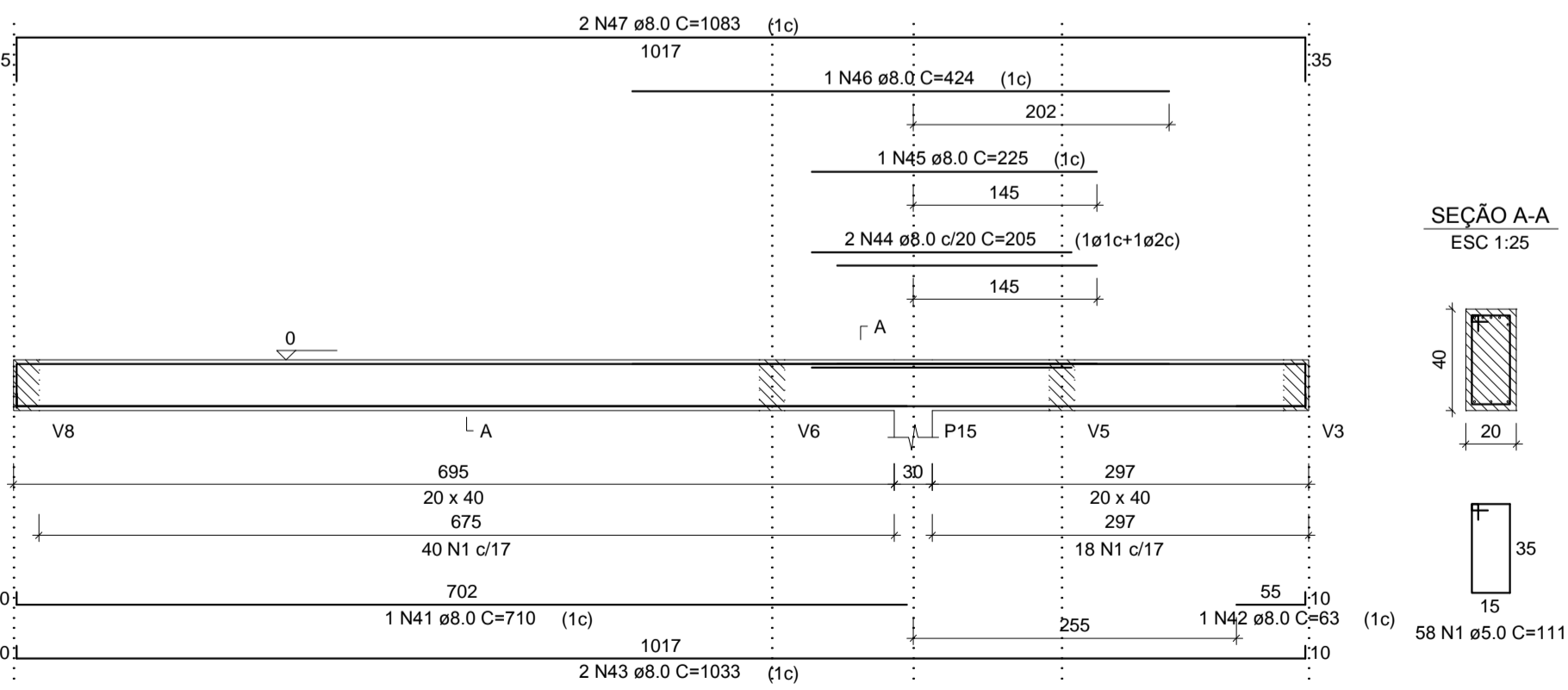
**V27**  
ESC 1:50



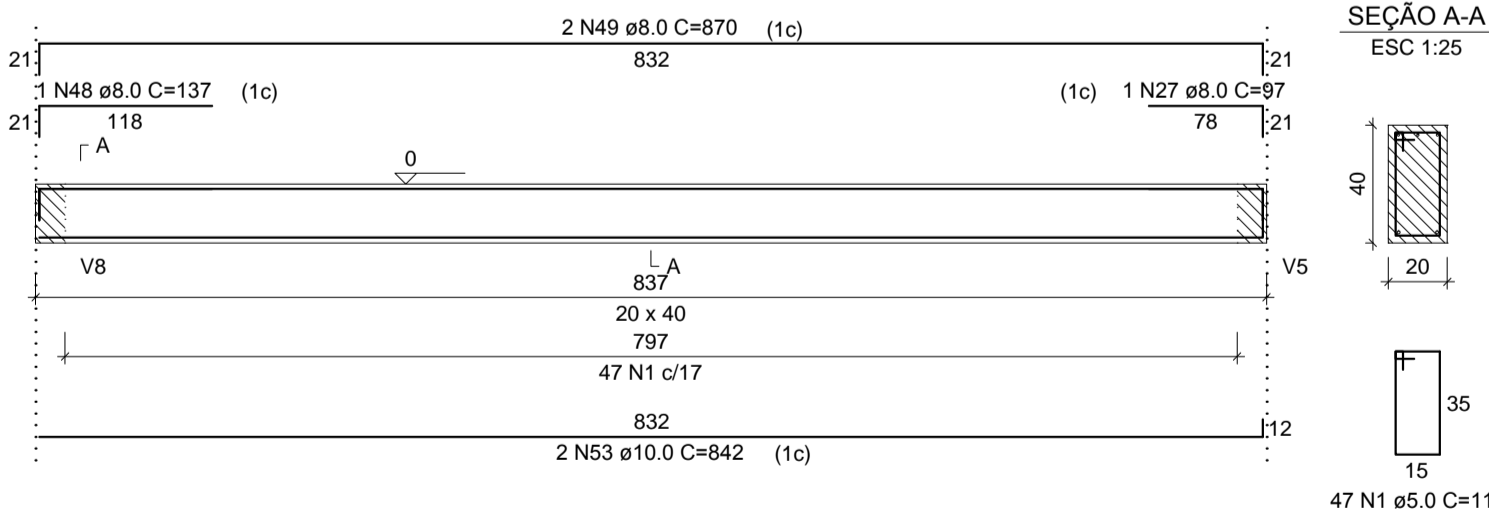
**V29**  
ESC 1:50



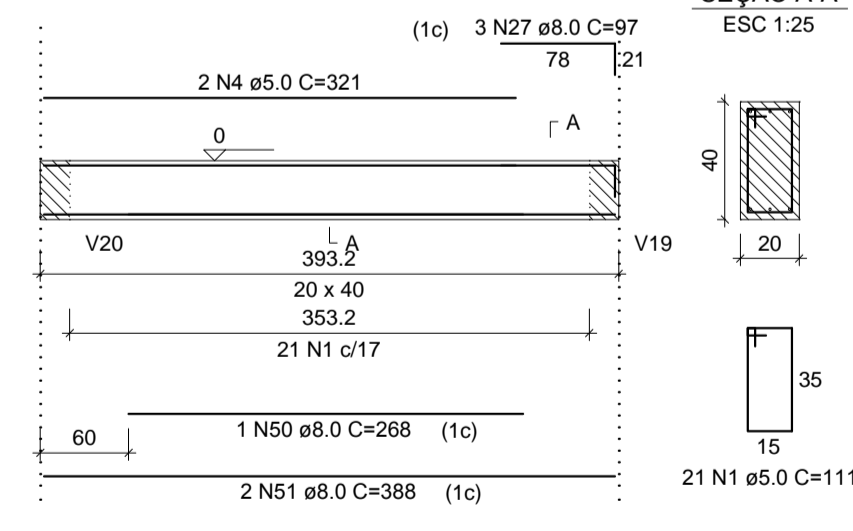
**V30**  
ESC 1:50



**V31**  
ESC 1:50



**V33**  
ESC 1:50



RELAÇÃO DO AÇO

AÇO	N	DIAM (mm)	QUANT	C.UNIT (cm)	C.TOTAL (cm)
CA60	1	5.0	532	111	59052
	2	5.0	2	748	1496
	3	5.0	2	585	1170
	4	5.0	2	321	642
	5	6.3	6	568	3408
	6	8.0	1	255	255
	7	8.0	1	181	181
	8	8.0	4	1130	4520
	9	8.0	1	103	103
	10	8.0	1	165	165
	11	8.0	3	113	339
	12	8.0	1	218	218
	13	8.0	1	223	223
	14	8.0	4	1081	4324
	15	8.0	3	170	510
	16	8.0	1	93	93
	17	8.0	1	219	219
	18	8.0	2	521	1042
	19	8.0	1	292	292
	20	8.0	2	704	1408
	21	8.0	1	118	118
	22	8.0	1	150	150
	23	8.0	2	1126	2252
	24	8.0	2	163	326
	25	8.0	3	448	1344
	26	8.0	6	116	696
	27	8.0	7	97	679
	28	8.0	1	103	103
	29	8.0	1	263	263
	30	8.0	2	911	1822
	31	8.0	4	467	1868
	32	8.0	2	910	1820
	33	8.0	1	453	453
	34	8.0	2	230	460
	35	8.0	1	300	300
	36	8.0	1	367	367
	37	8.0	1	427	427
	38	8.0	2	1193	2386
	39	8.0	3	248	744
	40	8.0	3	300	900
	41	8.0	1	710	710
	42	8.0	1	63	63
	43	8.0	2	1033	2066
	44	8.0	2	205	410
	45	8.0	1	225	225
	46	8.0	1	424	424
	47	8.0	2	1083	2166
	48	8.0	1	137	137
	49	8.0	2	870	1740
	50	8.0	1	268	268
	51	8.0	2	388	776
	52	10.0	2	473	946
	53	10.0	2	542	1084
	54	12.5	2	903	1806

RESUMO DO AÇO

AÇO	DIAM (mm)	C.TOTAL (m)	PESO + 10% (kg)
CA50	6.3	34.1	9.2
	8.0	403.6	175.2
	10.0	26.3	17.8
	12.5	18.1	19.1
CA60	5.0	623.6	105.7
PESO TOTAL (kg)			
CA50		221.3	
CA60		105.7	

Volume de concreto (C-30) = 7.33 m³  
 Área de forma = 91.58 m²

PROJETO ESTRUTURAL

CTG Pousada do Imigrante

PAVIMENTO BALDRAME  
VIGAS

Escala: 1/50	DESENHO	01
Desenho:	Revisão: 0	FOLHA
Data: 14/09/18	Unidade: cm	03/05

Gustavo Ribeiro da Silva  
 Engenheiro Civil, MSc.  
 CREA/RJ 208.184  
 54 - 9 81390048